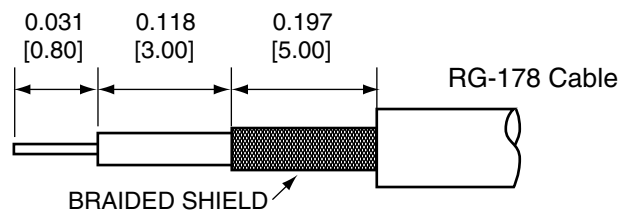
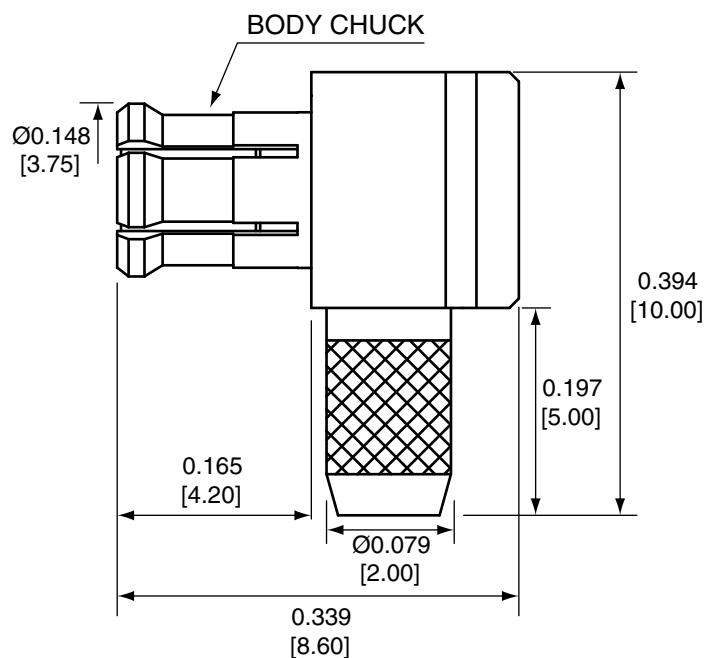


| Description | Material | Finish |
|-------------|------------|--------|
| Body | Brass | Gold |
| Pin | Brass | Gold |
| Insulation | PTFE | N/A |
| Crimp Ring | Brass | Gold |
| Body Chuck | Be Cu | Gold |
| Insulator | PTFE | N/A |
| Cover | Brass | Gold |
| Heat Shrink | Polyolefin | Black |

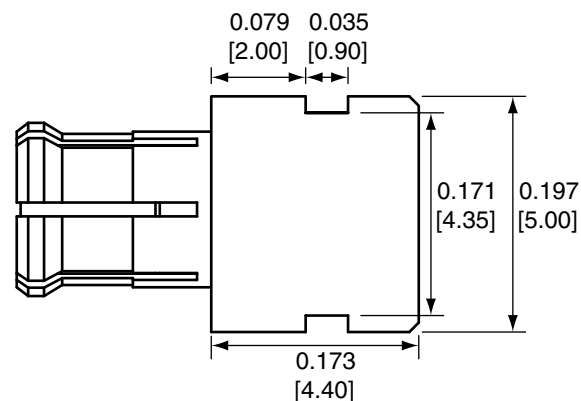


RECOMMENDED CABLE STRIPPING DIMENSIONS

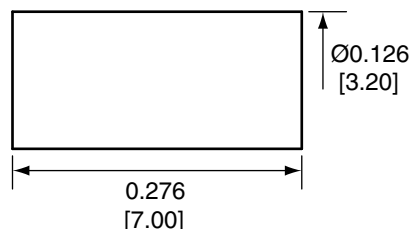
| REVISIONS | | | |
|-----------|---|-----------|------|
| REV | DESCRIPTION | DATE | APPV |
| B | Added new title block, heat shrink and instructions | 11-JUL-12 | SAH |
| C | Updated dimensions and Body Chuck callout; Added REACH/SVHC compliance language to note 3 | 9-OCT-18 | CLL |



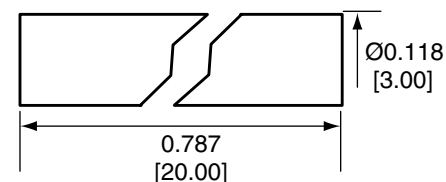
SIDE VIEW



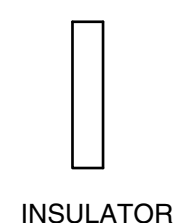
TOP VIEW



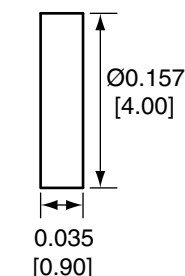
CRIMP RING



HEAT SHRINK



INSULATOR



COVER


CONMCX012-R178 ASSEMBLY INSTRUCTIONS

- Strip the cable to the recommended dimensions.
- Slip heat shrink and crimp ring onto stripped cable.
- Slide the cable into the body until the center conductor is centered in the fork.
- Push the braided shield over the barrel.
- Solder the center conductor into the center of the fork.
- Slide the crimp ring over the shield and crimp with a 0.100" hex crimp tool (or one labeled for use with RG-178 cable).
- Trim off any excess shield wire sticking out from the ring.
- Slip the heat shrink over the crimp ring until it is against the body and shrink.
- Insert insulator into body.
- Push the cover into the opening.

NOTES: (UNLESS OTHERWISE SPECIFIED)

- ALL DIMENSIONS ARE IN INCHES [mm].
- DIMENSIONS APPLY AFTER FINISHING.
- MANUFACTURE TO BE COMPLIANT WITH EU RoHS DIRECTIVE, USE MATERIALS THAT DO NOT CONTAIN REACH SUBSTANCES OF VERY HIGH CONCERN >1000ppm, AND USE DRC CONFLICT-FREE SOURCED MATERIALS.
- SAFETY BREAK ALL SHARP CORNERS AND EDGES .02 MAXIMUM.

WARNING: THIS DRAWING CONTAINS PROPRIETARY INFORMATION THAT IS THE SOLE PROPERTY OF LINX TECHNOLOGIES, AND SHALL BE TREATED AS SUCH. NO DISCLOSURE OR REPRODUCTION OF THIS DOCUMENT IS PERMITTED, IN WHOLE OR IN PART, WITHOUT THE EXPRESS WRITTEN PERMISSION OF LINX TECHNOLOGIES OR ITS DESIGNATED AGENTS.

| | | |
|-----------|---|--|
| MATERIAL: | TOLERANCES: | PROJECTION:  |
| | .020 [0.50]-.200 [5.00]= ±.008 [0.20] .200 [5.00]-1.200 [30.00]= ±.016 [0.40] 1.20 [30.0]-4.75 [120.0]= ±.024 [0.60] 4.75 [120.0]-12.40 [315.0]= ±.040 [1.0] | |
| FINISH: | DRAWN: B.MURPHY | DT: 11-JUL-12 |
| | ENGR: S.HOGAN | DT: 11-JUL-12 |

| | | | |
|---|----------------------------|----------------------------------|--------------|
| <div>Linx</div> | | 159 ORT LANE MERLIN, OR 97532 | |
| TITLE: MCX MALE RIGHT ANGLE CABLE END CRIMP FOR RG178 CABLE | | | |
| SIZE A | DWG. NO. CONMCX012-R178 | | REV C |
| SCALE: 2:1 | DO NOT SCALE DRAWING | | SHEET 1 OF 1 |