

DO NOT
SCALE FROM
THIS PRINT

NOTES:

1. \textcircled{C} REPRESENTS A CRITICAL DIMENSION.
2. MINIMUM PUSHOUT FORCE: .5 LB.
3. COPLANARITY: .004[0.10] = POS 05 THRU 26
.006[0.15] = POS 27 THRU 50
4. TUBE ALL POSITIONS. PARTS TO BE TUBED WITH NOTCH GOING WITH ARROW.
5. PINS CAN BE ORIENTED IN ANY DIRECTION; BOTH ROWS MUST FACE SAME WAY.
6. SEE NOTCH FOR PROPER ORIENTATION.
7. MAXIMUM PIN HEIGHT VARIATION: .003[0.08].
8. DUE TO HIGH AMOUNT OF INSERTION FORCE NEEDED, THE -LC OPTION IS NOT COMPATIBLE WITH AUTO PLACEMENT. SAMTEC RECOMMENDS MANUAL PLACEMENT FOR ALL ASSEMBLIES WITH THE -LC OPTION.
9. MEASUREMENT TO BE TAKEN AT BEND.

SFC-1XX-XX-XX-D-XX

NO OF POSITIONS

ALL POSITIONS AVAILABLE
-02 THRU -50

OPTIONS

(LEAVE BLANK FOR STANDARD AND USE SFM-XX-D)
 -A: ALIGNMENT PIN (USE SFM-XX-D-A)
 (SEE FIG 4, SHT 2)
 -LC: LOCKING CLIP (SEE FIG 6, SHT 3 & NOTE 8)
 (USE SFM-XX-D-LC)
 -TR: TAPE & REEL (SEE SHT 3)
 -K: POLYIMIDE FILM PAD (.005[0.13] THICKNESS)
 (SEE FIG 3, SHT 2) (USE K-DOT-.157-.250-.005)

LEAD STYLE

-T1: THROUGH HOLE
 (SEE FIG. 1, SHT. 1)
 -T2: SURFACE MOUNT
 (SEE FIG. 2, SHT. 2)

BODY SPECIFICATION

-D: DOUBLE ROW

PLATING SPECIFICATION

-F: 3 μ " FLASH SELECTIVE GOLD IN CONTACT AREA,
 MATTE TIN ON TAIL
 -L: 10 μ " LIGHT SELECTIVE GOLD IN CONTACT AREA,
 MATTE TIN ON TAIL
 -FM: 3 μ " FLASH SELECTIVE GOLD IN CONTACT AREA,
 MATTE TIN ON TAIL
 -LM: 10 μ " LIGHT SELECTIVE GOLD IN CONTACT AREA,
 MATTE TIN ON TAIL

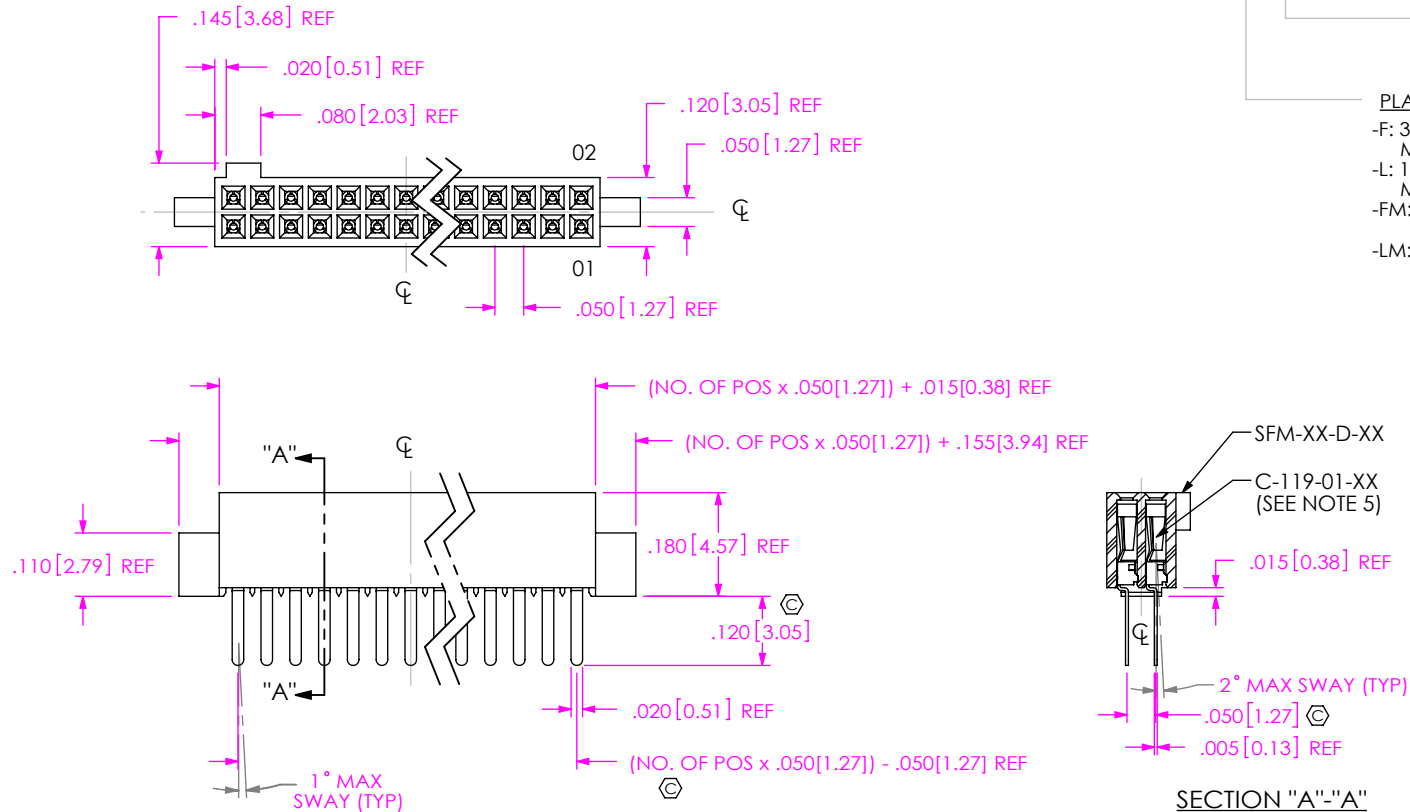


FIG 1
 THROUGH HOLE/STRAIGHT MODIFIED

UNLESS OTHERWISE SPECIFIED,
 DIMENSIONS ARE IN INCHES.

TOLERANCES ARE:

DECIMALS ANGLES
 .XX: $\pm .01$ [3] 2°
 .XXX: $\pm .005$ [13]
 .XXXX: $\pm .0020$ [51]

PROPRIETARY NOTE

THIS DOCUMENT CONTAINS CONFIDENTIAL AND PROPRIETARY INFORMATION AND ALL DESIGN, MANUFACTURING, REPRODUCTION, USE, PATENT RIGHTS AND SALES RIGHTS ARE EXPRESSLY RESERVED BY SAMTEC, INC. THIS DOCUMENT SHALL NOT BE DISCLOSED, IN WHOLE OR PART, TO ANY UNAUTHORIZED PERSON OR ENTITY NOR REPRODUCED, TRANSFERRED OR INCORPORATED IN ANY OTHER PROJECT IN ANY MANNER WITHOUT THE EXPRESS WRITTEN CONSENT OF SAMTEC, INC.

MATERIAL: DO NOT SCALE DRAWING
 INSULATOR: LCP, COLOR: BLACK
 CONTACT: PHOSPHOR BRONZE

SHEET SCALE: 3:1

samtec

520 PARK EAST BLVD, NEW ALBANY, IN 47150
 PHONE: 812-944-6733 FAX: 812-948-5047
 e-Mail: info@SAMTEC.com code 55322

DESCRIPTION:
 .050 x .050 SOCKET STRIP DOUBLE ROW ASSEMBLY

DWG. NO.

SFC-1XX-XX-XX-D-XX

BY: BRATCHER 5/25/01

SHEET 1 OF 3

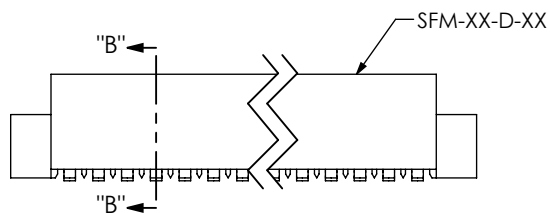
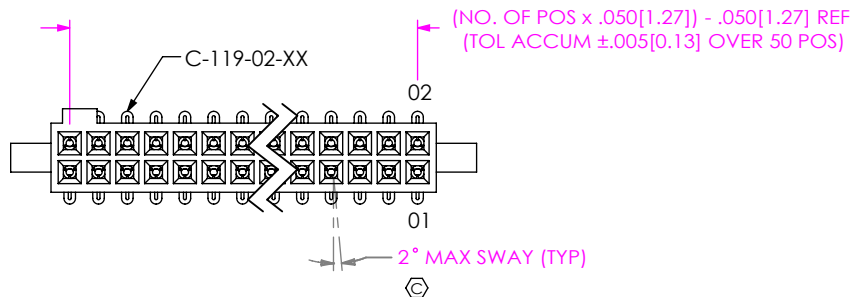
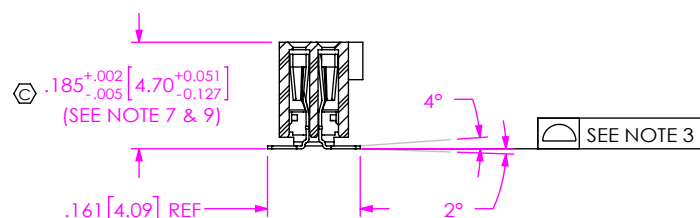
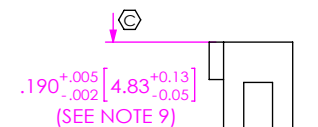


FIG 2
-T2: SURFACE MOUNT
(SAME AS FIG 1, DIFFERENT AS SHOWN)



SECTION "B"-"B"



IN-PROCESS
-T2

FOR HAND FILL ONLY
NOTE: DIMENSION APPLIES PRIOR
TO RE-PRESS, SEE SECTION "B-B"
FOR FINISHED DIMENSION

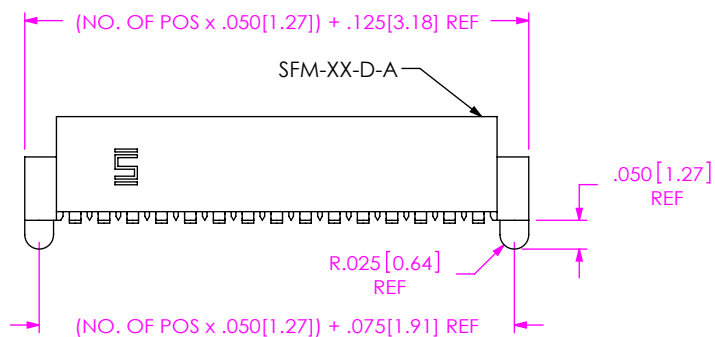


FIG 4
-A: ALIGNMENT PIN
(SAME AS FIG 2, DIFFERENT AS SHOWN)

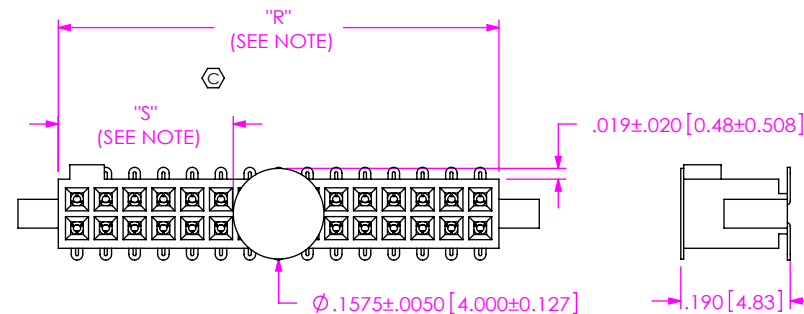
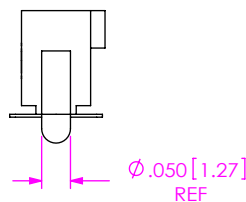


FIG 3
-K: POLYIMIDE FILM PAD
(SAME AS FIG 2, DIFFERENT AS SHOWN)
NOTE: "R" = USED MEASURED DIMENSION REF
"S" = {"R" - .1575[4.000]}/2±.020[0.51]

PROPRIETARY NOTE
THIS DOCUMENT CONTAINS CONFIDENTIAL AND
PROPRIETARY INFORMATION AND ALL DESIGN,
MANUFACTURING, REPRODUCTION, USE, PATENT RIGHTS
AND SALES RIGHTS ARE EXPRESSLY RESERVED BY SAMTEC,
INC. THIS DOCUMENT SHALL NOT BE DISCLOSED, IN WHOLE
OR PART, TO ANY UNAUTHORIZED PERSON OR ENTITY NOR
REPRODUCED, TRANSFERRED OR INCORPORATED IN ANY
OTHER PROJECT IN ANY MANNER WITHOUT THE EXPRESS
WRITTEN CONSENT OF SAMTEC, INC.

samtec
520 PARK EAST BLVD, NEW ALBANY, IN 47150
PHONE: 812-944-6733 FAX: 812-948-5047
e-Mail info@SAMTEC.com code 55322

DO NOT SCALE DRAWING
SHEET SCALE: 3:1

DESCRIPTION:
.050 x .050 SOCKET STRIP DOUBLE ROW ASSEMBLY

DWG. NO.
SFC-1XX-XX-XX-D-XX

BY: BRATCHER 5/25/01 SHEET 2 OF 3

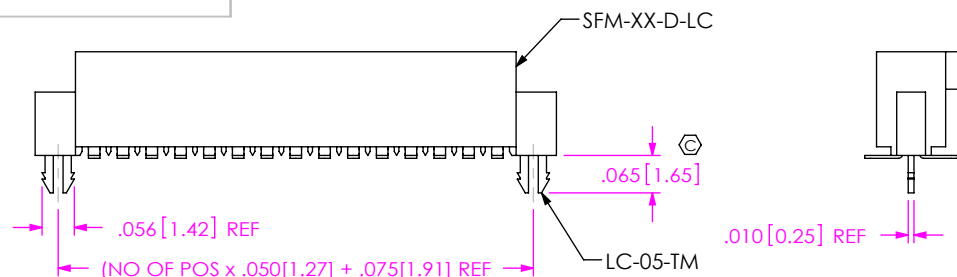
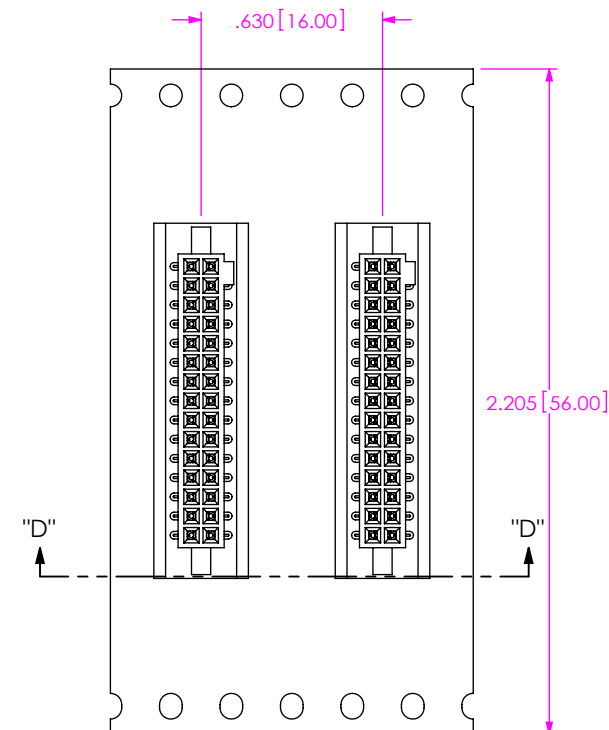
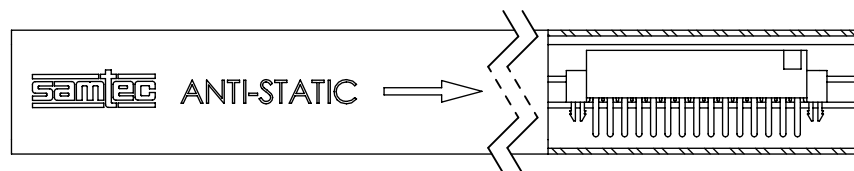
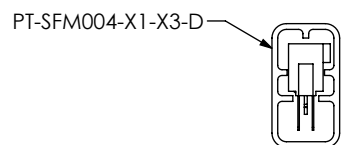
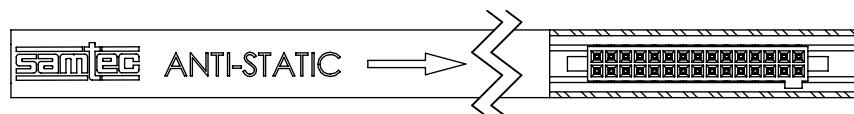
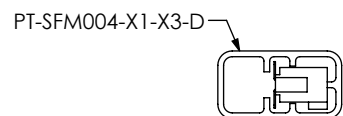
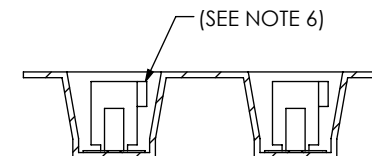


FIG 6
-LC: LOCKING CLIP
(SAME AS FIG 2, DIFFERENT AS SHOWN)



UNWINDING DIRECTION →



SECTION "D"- "D"
SCALE 2 : 1

PACKAGING VIEW
-TR: TAPE AND REEL

LEAD STYLE	PACKAGING TUBE	PLUG
-105-T2-X-D, -105-T2-X-D-LC, -105-T2-D-A, -105-T2-D-K-LC	PT-1-24-14-09	TP-24-02
-T1-D, -T1-D-LC, -T1-D-A, -T1-D-K	PT-SFM004-X1-X3-D	TP-24-02
-T2-D, -T2-D-K, -T2-D-LC, -T2-D-A, -T2-D-K-A, -T2-D-LC-K	PT-SFM004-X1-X3-D	TP-24-02
-102-T1-D, -102-T1-D-LC, -102-T1-D-A, -102-T1-D-K	PT-1-24-15-09	TP-24-02

*FOR MACHINE LOADING OF TUBES FOR PARTS W/O PADS USE PT-1-24-14-09, TP-24-02

5 POS -T1 LEAD STYLE MAY BE TUBED USING
PT-1-24-15-09, TP-24-02

F:\DWG\MISC\MKTG\SFC-1XX-XX-XX-D-XX-MKT.SLDDRW

PROPRIETARY NOTE
THIS DOCUMENT CONTAINS CONFIDENTIAL AND PROPRIETARY INFORMATION AND ALL DESIGN, MANUFACTURING, REPRODUCTION, USE, PATENT RIGHTS AND SALES RIGHTS ARE EXPRESSLY RESERVED BY SAMTEC, INC. THIS DOCUMENT SHALL NOT BE DISCLOSED, IN WHOLE OR PART, TO ANY UNAUTHORIZED PERSON OR ENTITY NOR REPRODUCED, TRANSFERRED OR INCORPORATED IN ANY OTHER PROJECT IN ANY MANNER WITHOUT THE EXPRESS WRITTEN CONSENT OF SAMTEC, INC.

DO NOT SCALE DRAWING

SHEET SCALE: 3:1

samtec

520 PARK EAST BLVD, NEW ALBANY, IN 47150
PHONE: 812-944-6733 FAX: 812-948-5047
e-Mail info@SAMTEC.com code 55322

DESCRIPTION:
.050 x .050 SOCKET STRIP DOUBLE ROW ASSEMBLY

DWG. NO.
SFC-1XX-XX-XX-D-XX

BY: BRATCHER 5/25/01

SHEET 3 OF 3