

MATERIAL NUMBER	# OF COLUMNS	# OF DIFF PAIR	DIM 'A' MAX	DIM 'B' PTH	PTH Ø
170510-18**	8	24	15.20	13.30	0.46+0.05
170510-11**	10	30	19.00	17.10	
170510-18**	8	24	15.20	13.30	0.39+0.05
170510-11**	10	30	19.00	17.10	

170510-1***

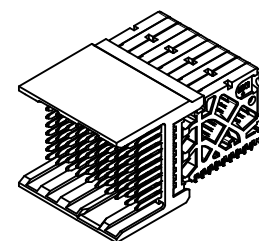
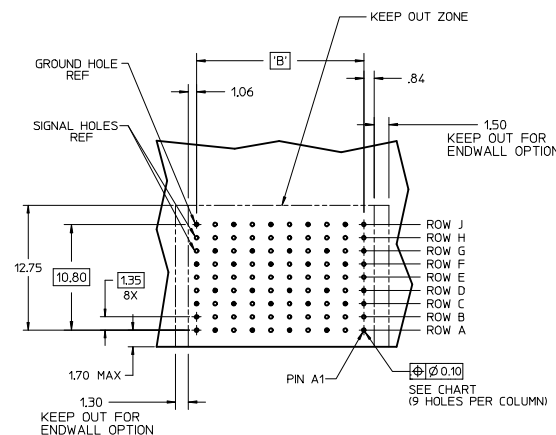
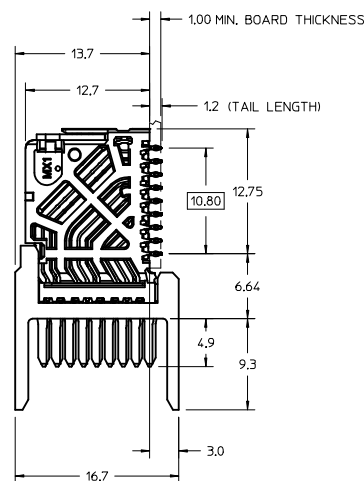
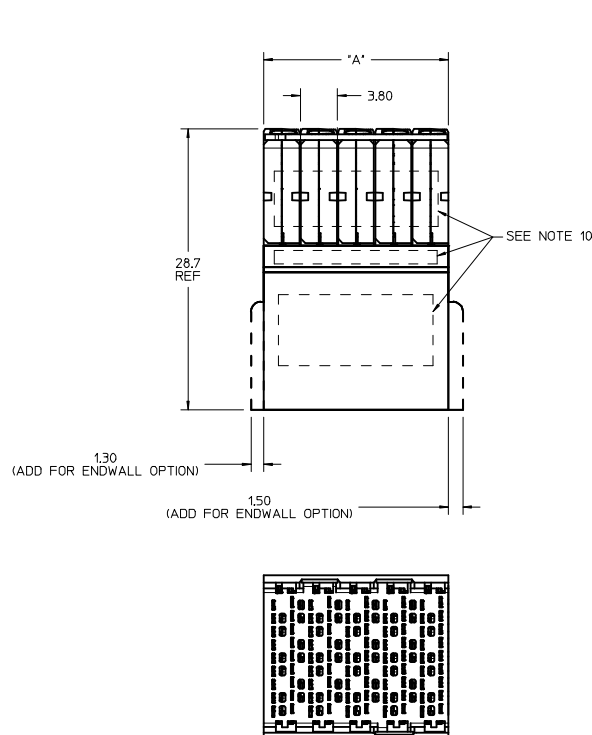
MODULE TYPE
1 = UNGUIDED, LEAD-FREE

OF COLUMNS
1 = 10 COLUMNS
8 = 8 COLUMNS

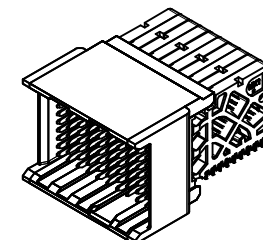
PIN LENGTH (P)
4 = 4.90 (0.46 PTH)
5 = 5.50 (0.46 PTH)
7 = 4.90 (0.39 PTH)
8 = 5.50 (0.39 PTH)

END WALL OPTIONS
0 = OPEN ENDS
1 = LEFT ENDWALL
2 = DUAL ENDWALL
3 = RIGHT ENDWALL

- NOTES:
1. MATERIALS: HOUSING - LIQUID CRYSTAL POLYMER (LCP), GLASS-FILLED, UL94V-0
TERMINALS - HIGH PERFORMANCE COPPER ALLOY
 2. FINISH: 30µN SELECTIVE GOLD IN CONTACT AREA, SELECTIVE TIN ON PCB TAILS, NICKEL OVERALL.
 3. REFER TO MOLEX PRODUCT SPECIFICATION PS-170540-999 FOR PERFORMANCE SPECIFICATIONS AND ADDITIONAL PCB INFORMATION.
 4. EACH SIGNAL WAFER CONTAINS 2 COLUMNS OF TERMINALS.
 5. PRODUCT IS PACKAGED PER PK-70873-041.
 6. THIS PART CONFORMS TO CLASS B REQUIREMENTS OF COSMETIC SPEC PS-45499-002.
 7. REFER TO MOLEX SALES DRAWING SD-170340-001 FOR THE MATING RECEPTACLES.
 8. REFER TO MOLEX PCB ROUTING GUIDE AS-76060-990 FOR ANTIPAD AND ROUTING RECOMMENDATIONS.
 9. GROUND PATHS ARE NOT DISCRETE CIRCUITS.
 10. MARKING: LOCATED APPROXIMATELY AS SHOWN, PART NUMBER AND DATE CODE.

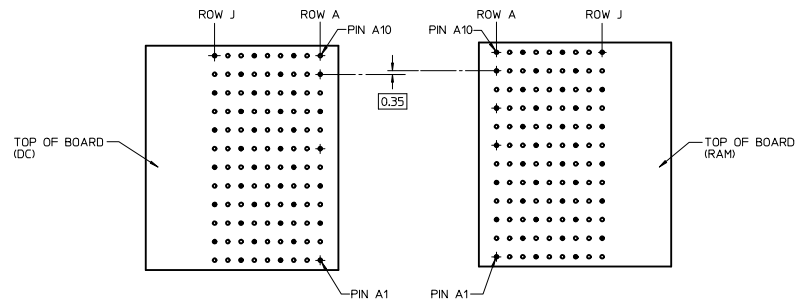


OPEN END OPTION



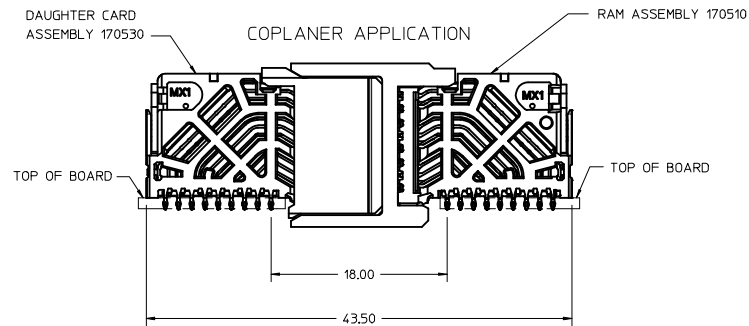
DUAL WALL OPTION

REV'D 12, 14, 16-COL. OPTIONS IEC NO. UCP2017-2489 DRAWN BY: DRWINDAVARANA CHKD: CHKO APPR: TELO DATE: 2017/05/17	QUALITY SYMBOLS ▽=0 ▽=0 ▽=0	GENERAL TOLERANCES (UNLESS SPECIFIED) mm INCH 4 PLACES ± --- ± --- 3 PLACES ± --- ± --- 2 PLACES ± 0.13 ± --- 1 PLACE ± 0.25 ± --- 0 PLACE ± --- ± --- ANGULAR ±1/2° DRAFT WHERE APPLICABLE MUST REMAIN WITHIN DIMENSIONS	DIMENSION STYLE MM ONLY DRAWN BY: MKRAUSE CHECKED BY: TELO APPROVED BY: TELO DATE: 2013/05/31 DATE: 2016/02/22 DATE: 2014/03/13	SCALE 4:1 DESIGN UNITS METRIC THIRD ANGLE PROJECTION	TITLE IMPACT 3P 85 OHM RAM SIGNAL MODULE ASSEMBLY UNGUIDED SALES DRAWING molex	MATERIAL NO. SD-170510-0002	DOCUMENT NO. SD-170510-0002	SHEET NO. 1 OF 2



COPLANAR MATED SIGNAL PATHS

DC PIN A10-----RAM PIN A10
DC PIN A1-----RAM PIN A1



<div>SEE SHEET 1</div> <div>IEC NO: UCP2017-2489</div> <div>DRAWN: VAVARA</div> <div>2017/05/17</div> <div>CHKD: CHYD</div> <div>2017/05/12</div> <div>APPR: TELO</div> <div>REV: A3</div>	QUALITY SYMBOLS	GENERAL TOLERANCES (UNLESS SPECIFIED)		DIMENSION STYLE		SCALE	DESIGN UNITS	<div>THIRD ANGLE PROJECTION</div>	
				MM ONLY		4:1	METRIC		
	▽=0	mm	INCH	DRAWN BY	DATE	TITLE			
	▽=0	4 PLACES	±	---	±	---	IMPACT 3P 85 OHM RAM		
	▽=0	3 PLACES	±	---	±	---	SIGNAL MODULE ASSEMBLY		
		2 PLACES	±	0.13	±	---	UNGUIDED SALES DRAWING		
		1 PLACE	±	0.25	±	---	molex		
		0 PLACE	±	---	±	---	DOCUMENT NO.		
		ANGULAR ±1/2°		MATERIAL NO.		SD-170510-0002			
		DRAFT WHERE APPLICABLE MUST REMAIN WITHIN DIMENSIONS		SEE CHART		SHEET NO.			
			SIZE D	THIS DRAWING CONTAINS INFORMATION THAT IS PROPRIETARY TO MOLEX INCORPORATED AND SHOULD NOT BE USED WITHOUT WRITTEN PERMISSION				2 OF 2	

20 19 18 17 16 15 14 13 12 11 10 9 8 7 6 5 4 3 2 1

MATERIAL NUMBER	# OF COLUMNS	# OF DIFF PAIR	DIM 'A' MAX	DIM 'B' PTH	PTH Ø
170510-18**	8	24	15.20	13.30	0.46+0.05
170510-11**	10	30	19.00	17.10	
170510-18**	8	24	15.20	13.30	0.39+0.05
170510-11**	10	30	19.00	17.10	

170510-1***

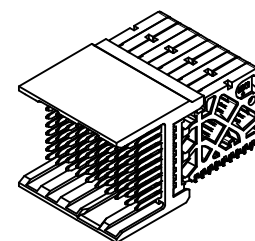
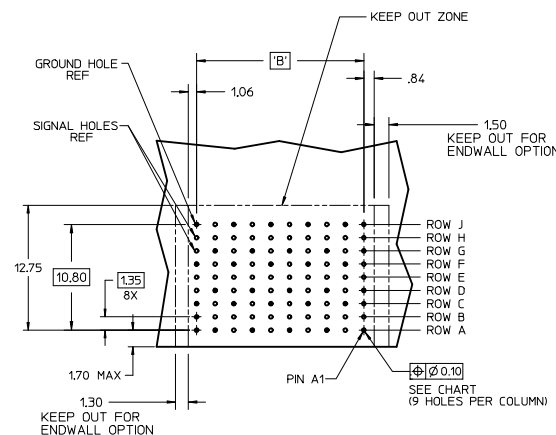
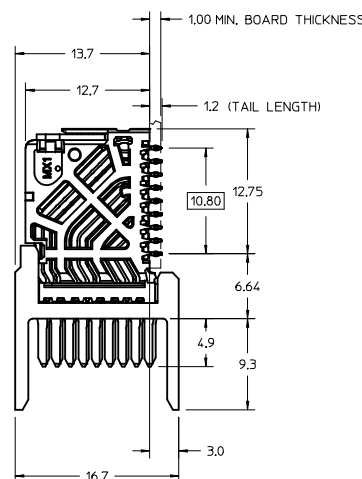
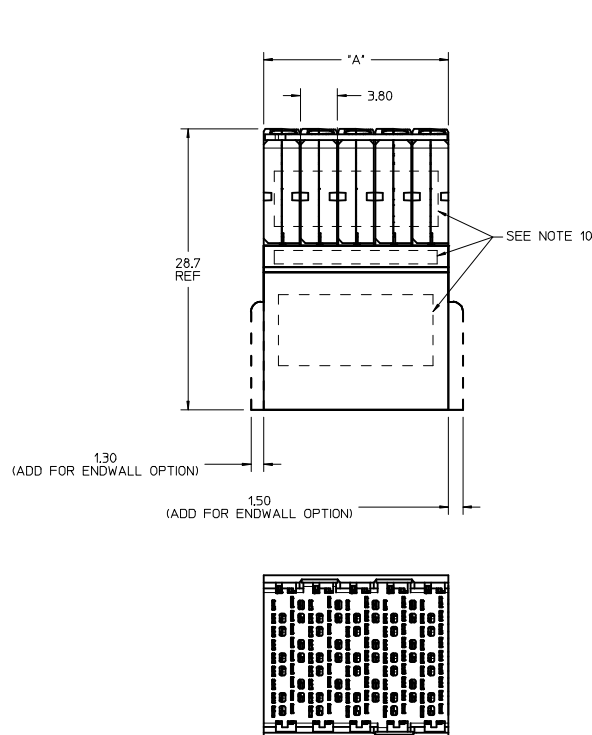
MODULE TYPE
1 = UNGUIDED, LEAD-FREE

OF COLUMNS
1 = 10 COLUMNS
8 = 8 COLUMNS

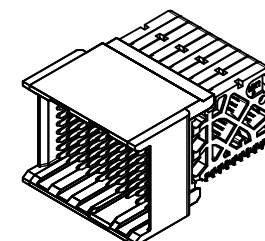
PIN LENGTH (P)
4 = 4.90 (0.46 PTH)
5 = 5.50 (0.46 PTH)
7 = 4.90 (0.39 PTH)
8 = 5.50 (0.39 PTH)

END WALL OPTIONS
0 = OPEN ENDS
1 = LEFT ENDWALL
2 = DUAL ENDWALL
3 = RIGHT ENDWALL

- NOTES:
1. MATERIALS: HOUSING - LIQUID CRYSTAL POLYMER (LCP), GLASS-FILLED, UL94V-0
TERMINALS - HIGH PERFORMANCE COPPER ALLOY
 2. FINISH: 30µN SELECTIVE GOLD IN CONTACT AREA, SELECTIVE TIN ON PCB TAILS, NICKEL OVERALL.
 3. REFER TO MOLEX PRODUCT SPECIFICATION PS-170540-999 FOR PERFORMANCE SPECIFICATIONS AND ADDITIONAL PCB INFORMATION.
 4. EACH SIGNAL WAFER CONTAINS 2 COLUMNS OF TERMINALS.
 5. PRODUCT IS PACKAGED PER PK-70873-041.
 6. THIS PART CONFORMS TO CLASS B REQUIREMENTS OF COSMETIC SPEC PS-45499-002.
 7. REFER TO MOLEX SALES DRAWING SD-170340-001 FOR THE MATING RECEPTACLES.
 8. REFER TO MOLEX PCB ROUTING GUIDE AS-76060-990 FOR ANTIPAD AND ROUTING RECOMMENDATIONS.
 9. GROUND PATHS ARE NOT DISCRETE CIRCUITS.
 10. MARKING: LOCATED APPROXIMATELY AS SHOWN, PART NUMBER AND DATE CODE.

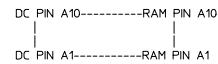


OPEN END OPTION



DUAL WALL OPTION

REV'D 12, 14, 16-COL. OPTIONS EC NO: UCP2017-2489 DRAWN: VARVARA CHKD: APPR: TELO 2017/05/17 2017/05/17	QUALITY SYMBOLS ▽=0 ▽=0 ▽=0	GENERAL TOLERANCES (UNLESS SPECIFIED) mm INCH 4 PLACES ± --- ± --- 3 PLACES ± --- ± --- 2 PLACES ± 0.13 ± --- 1 PLACE ± 0.25 ± --- 0 PLACE ± --- ± --- ANGULAR ±1/2° DRAFT WHERE APPLICABLE MUST REMAIN WITHIN DIMENSIONS	DIMENSION STYLE MM ONLY DRAWN BY DATE CHECKED BY DATE APPROVED BY DATE TELO 2013/05/31 TELO 2016/02/22 TELO 2014/03/13	SCALE 4:1 DESIGN UNITS METRIC THIRD ANGLE PROJECTION	TITLE IMPACT 3P 85 OHM RAM SIGNAL MODULE ASSEMBLY UNGUIDED SALES DRAWING molex	MATERIAL NO. SD-170510-0002	DOCUMENT NO.	SHEET NO. 1 OF 2



SIZE	D
------	---

20	19	18	17	16	15	14	13	12	11	10	9	8	7	6	5	4	3	2	1
MATERIAL NUMBER	# OF COLUMNS	# OF DIFF PAIR	DIM 'A' MAX	DIM 'B'	PTH ϕ														
170510-8**	8	24	22.80	13.30	0.46 \pm 0.05														
170510-8**					0.39 \pm 0.05														
170510-1**	10	30	26.60	17.10	0.46 \pm 0.05														
170510-1**					0.39 \pm 0.05														

170510-****

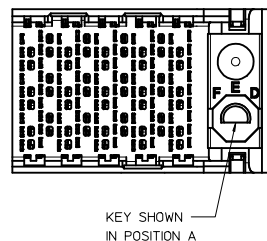
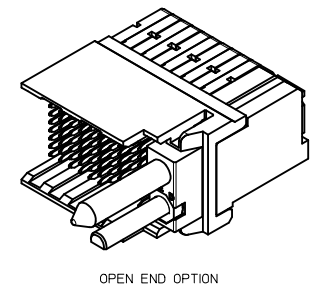
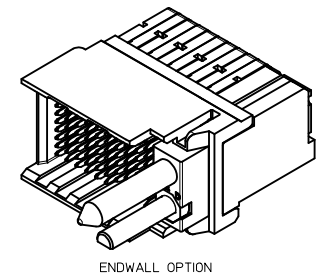
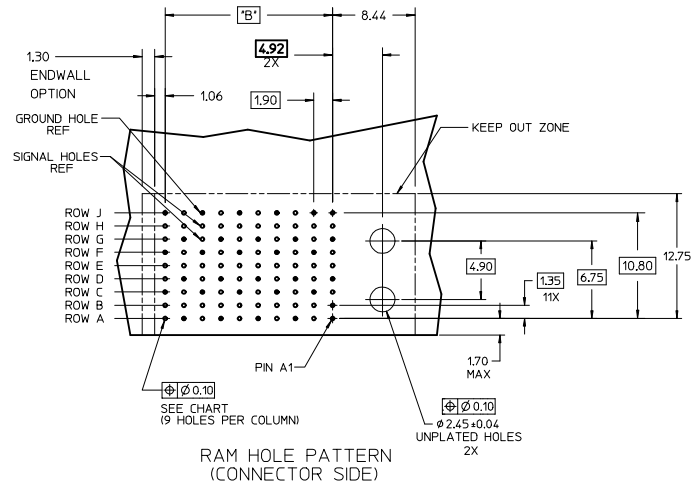
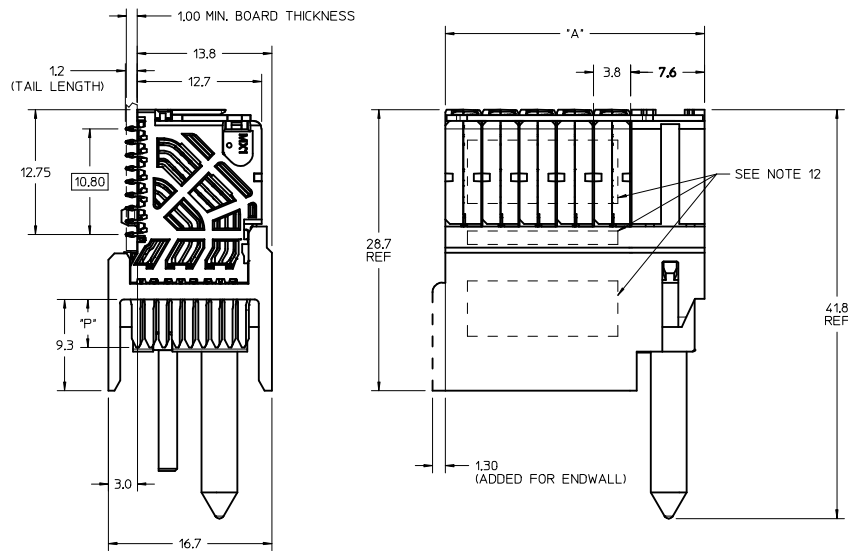
MODULE TYPE
5 = RIGHT GUIDED, LEAD-FREE
9 = RIGHT GUIDED, LEAD-FREE W/ ENDWALL

OF COLUMNS
1 = 10 COLUMNS
8 = 8 COLUMNS

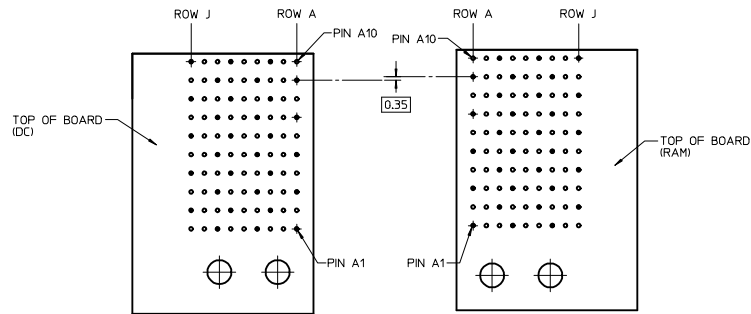
PIN LENGTH (P)
4 = 4.90 (0.46 PTH)
5 = 5.50 (0.46 PTH)
7 = 4.90 (0.39 PTH)
8 = 5.50 (0.39 PTH)

KEY ORIENTATION
0 = NO KEY
1 = A 5 = E
2 = B 6 = F
3 = C 7 = G
4 = D 8 = H

- NOTES:
1. MATERIALS: HOUSING - LIQUID CRYSTAL POLYMER (LCP), GLASS-FILLED, UL94V-0
TERMINALS - HIGH PERFORMANCE COPPER ALLOY
 2. FINISH: 30MN SELECTIVE GOLD IN CONTACT AREA, SELECTIVE TIN ON PCB TAILS, NICKEL OVERALL.
 3. REFER TO MOLEX PRODUCT SPECIFICATION PS-170540-999 FOR PERFORMANCE SPECIFICATIONS AND ADDITIONAL PCB INFORMATION.
 4. EACH SIGNAL WAFER CONTAINS 2 COLUMNS OF TERMINALS.
 5. PRODUCT IS PACKAGED PER PK-70873-041.
 6. THIS PART CONFORMS TO CLASS B REQUIREMENTS OF COSMETIC SPEC PS-45499-002.
 7. REFER TO MOLEX SALES DRAWING SD-170340-002 FOR THE MATING RECEPTACLES.
 8. REFER TO MOLEX PCB ROUTING GUIDE AS-76060-990 FOR ANTIPAD AND ROUTING RECOMMENDATIONS.
 9. CONNECTORS SUPPLIED WITH A 2-32 SCREW 73726-0000 (9.5mm \pm 38mm THREADABLE SCREW LENGTH). THE MAX BOARD THICKNESS IS 4.4mm.
 10. GUIDE RIGHT RAM MATES WITH A GUIDE LEFT DAUGHTERCARD.
 11. GROUND PATHS ARE NOT DISCRETE CIRCUITS.
 12. MARKING: LOCATED APPROXIMATELY AS SHOWN. PART NUMBER AND DATE CODE.

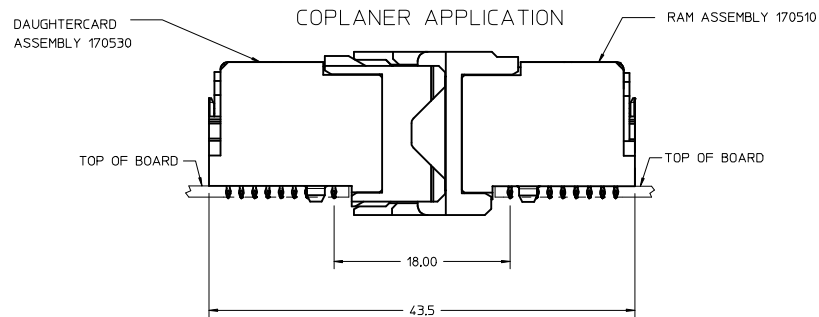



REV'D 12. 14. 16-COL. OPTIONS IEC NO. UCP2017-2489 DRAWN: VARARA CHKO: APPR: TELO REV A2	QUALITY SYMBOLS ▽=0 ▽=0 ▽=0	GENERAL TOLERANCES (UNLESS SPECIFIED)		DIMENSION STYLE MM ONLY		SCALE 4:1	DESIGN UNIT METRIC	THIRD ANGLE PROJECTION IMPACT 3P 85 OHM RAM RIGHT GUIDED ASSEMBLY SALES DRAWING molex MATERIAL NO. SEE CHART DOCUMENT NO. SD-170510-0004 SHEET NO. 1 OF 2
		4 PLACES \pm --- \pm --- 3 PLACES \pm --- \pm --- 2 PLACES \pm 0.13 \pm --- 1 PLACE \pm 0.25 \pm --- 0 PLACE \pm --- \pm ---		mm INCH --- --- --- --- --- --- --- ---		DRAWN BY MKRAUSE DATE 2013/05/31	TITLE 2013/05/31	
		ANGULAR \pm 1/2° DRAFT WHERE APPLICABLE MUST REMAIN WITHIN DIMENSIONS		CHECKED BY TELO DATE 2016/02/22		APPROVED BY TELO DATE 2014/03/19	DATE 2014/03/19	
						SIZE D		



COPLANAR MATED SIGNAL PATHS

DC PIN A10-----RAM PIN A10
DC PIN A1-----RAM PIN A1



PROPOSED IEC NO: UCP2017-2489 DRAWN: VARARA CHKD: APP: TELO REV A2	DESCRIPTION 2017/05/17 2017/05/22	QUALITY SYMBOLS ▽=0 ▽=0 ▽=0	GENERAL TOLERANCES (UNLESS SPECIFIED)		DIMENSION STYLE MM ONLY		SCALE 4:1	DESIGN UNITS METRIC	 THIRD ANGLE PROJECTION	TITLE IMPACT 3P 85 OHM RAM RIGHT GUIDED ASSEMBLY SALES DRAWING molex	DOCUMENT NO. SD-170510-0004	SHEET NO. 2 OF 2	
					DRAWN BY MKRAUSE	DATE 2013/05/31							
			4 PLACES ±		CHECKED BY								DATE
			3 PLACES ±		TELO								2016/02/22
			2 PLACES ±		APPROVED BY								DATE
			1 PLACE ±		TELO								2014/03/19
			0 PLACE ±										
			ANGULAR ±1/2°		MATERIAL NO.								
			DRAFT WHERE APPLICABLE MUST REMAIN WITHIN DIMENSIONS		SEE CHART								
			SIZE D		THIS DRAWING CONTAINS INFORMATION THAT IS PROPRIETARY TO MOLEX INCORPORATED AND SHOULD NOT BE USED WITHOUT WRITTEN PERMISSION								

20	19	18	17	16	15	14	13	12	11	10	9	8	7	6	5	4	3	2	1
MATERIAL NUMBER	# OF COLUMNS	# OF DIFF PAIR	DIM 'A' MAX	DIM 'B'	PTH ϕ														
170510-8**	8	24	22.80	13.30	0.46 \pm 0.05														
170510-8**					0.39 \pm 0.05														
170510-1**	10	30	26.60	17.10	0.46 \pm 0.05														
170510-1**					0.39 \pm 0.05														

170510-****

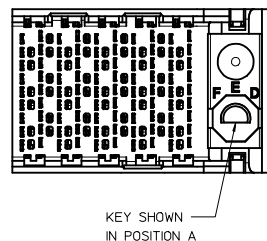
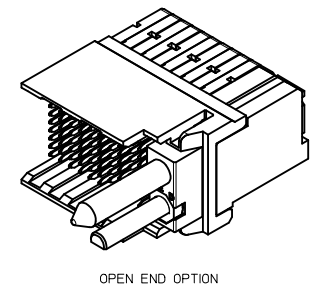
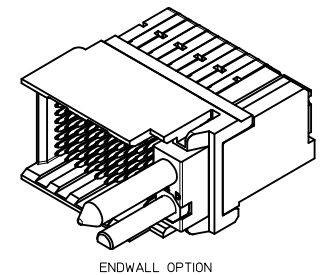
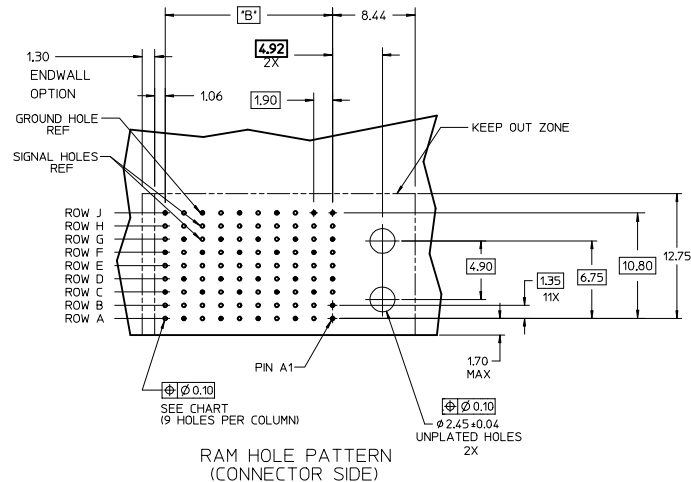
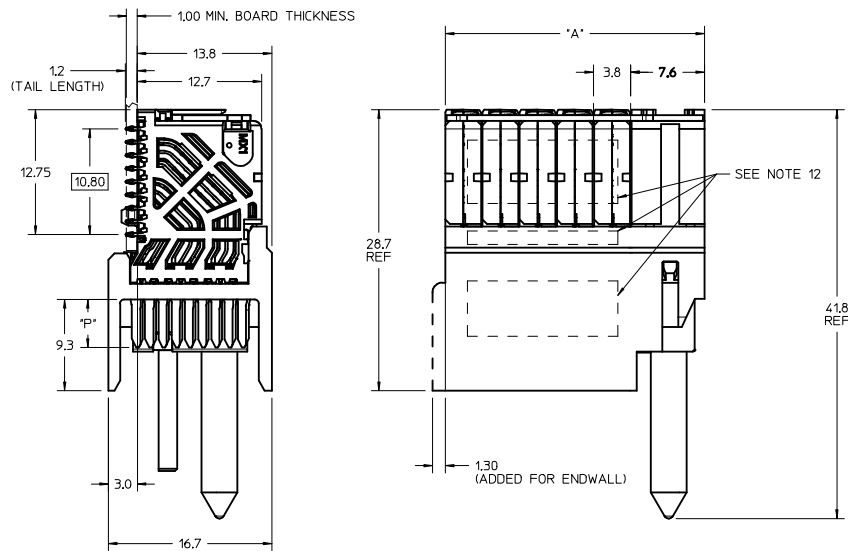
MODULE TYPE
5 = RIGHT GUIDED, LEAD-FREE
9 = RIGHT GUIDED, LEAD-FREE W/ ENDWALL

OF COLUMNS
1 = 10 COLUMNS
8 = 8 COLUMNS

PIN LENGTH (P)
4 = 4.90 (0.46 PTH)
5 = 5.50 (0.46 PTH)
7 = 4.90 (0.39 PTH)
8 = 5.50 (0.39 PTH)

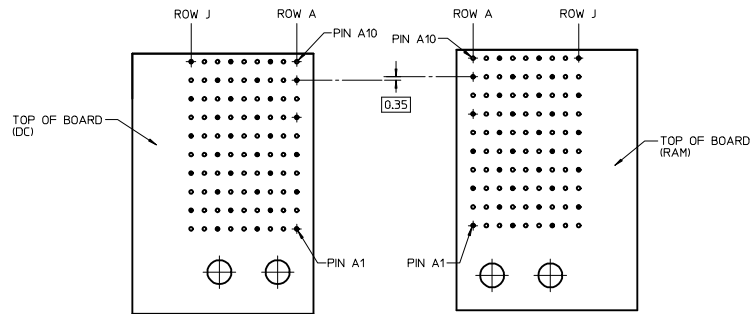
KEY ORIENTATION
0 = NO KEY
1 = A 5 = E
2 = B 6 = F
3 = C 7 = G
4 = D 8 = H

- NOTES:
1. MATERIALS: HOUSING - LIQUID CRYSTAL POLYMER (LCP), GLASS-FILLED, UL94V-0
TERMINALS - HIGH PERFORMANCE COPPER ALLOY
 2. FINISH: 30MN SELECTIVE GOLD IN CONTACT AREA, SELECTIVE TIN ON PCB TAILS, NICKEL OVERALL.
 3. REFER TO MOLEX PRODUCT SPECIFICATION PS-170540-999 FOR PERFORMANCE SPECIFICATIONS AND ADDITIONAL PCB INFORMATION.
 4. EACH SIGNAL WAFER CONTAINS 2 COLUMNS OF TERMINALS.
 5. PRODUCT IS PACKAGED PER PK-70873-041.
 6. THIS PART CONFORMS TO CLASS B REQUIREMENTS OF COSMETIC SPEC PS-45499-002.
 7. REFER TO MOLEX SALES DRAWING SD-170340-002 FOR THE MATING RECEPTACLES.
 8. REFER TO MOLEX PCB ROUTING GUIDE AS-76060-990 FOR ANTIPAD AND ROUTING RECOMMENDATIONS.
 9. CONNECTORS SUPPLIED WITH A 2-32 SCREW 73726-0000 (9.5mm \pm 38mm THREADABLE SCREW LENGTH). THE MAX BOARD THICKNESS IS 4.4mm.
 10. GUIDE RIGHT RAM MATES WITH A GUIDE LEFT DAUGHTERCARD.
 11. GROUND PATHS ARE NOT DISCRETE CIRCUITS.
 12. MARKING: LOCATED APPROXIMATELY AS SHOWN. PART NUMBER AND DATE CODE.



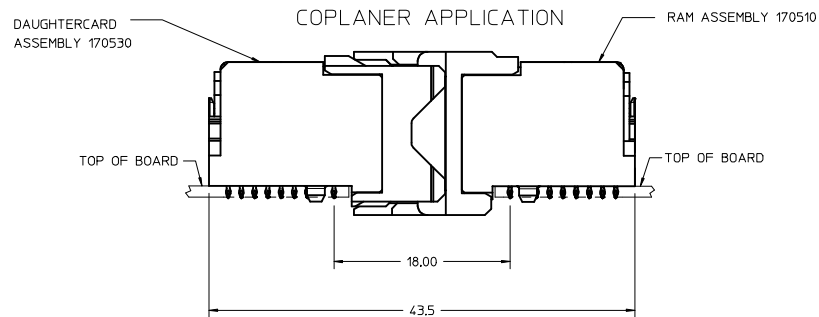
KEY SHOWN
IN POSITION A


REV'D 12, 14, 16-COL. OPTIONS EC NO.: UCP2017-2489 DRAWN: VARARA CHKO: APPR: TELO REV A2	QUALITY SYMBOLS ▽=0 ▽=0 ▽=0	DESCRIPTION	GENERAL TOLERANCES (UNLESS SPECIFIED)		DIMENSION STYLE MM ONLY		SCALE 4:1	DESIGN UNIT METRIC	THIRD ANGLE PROJECTION	
									TITLE IMPACT 3P 85 OHM RAM RIGHT GUIDED ASSEMBLY SALES DRAWING molex	
ANGULAR $\pm 1/2^\circ$		MATERIAL NO.		DOCUMENT NO.		SHEET NO.				
DRAFT WHERE APPLICABLE MUST REMAIN WITHIN DIMENSIONS		SEE CHART		SD-170510-0004		1 OF 2				
		SIZE D		THIS DRAWING CONTAINS INFORMATION THAT IS PROPRIETARY TO MOLEX INCORPORATED AND SHOULD NOT BE USED WITHOUT WRITTEN PERMISSION						



COPLANAR MATED SIGNAL PATHS

DC PIN A10-----RAM PIN A10
DC PIN A1-----RAM PIN A1



PROPOSED IEC NO: UCP2017-2489 DRAWN: VARARA CHKD: APP: TEL REV A2	QUALITY SYMBOLS ▽=0 ▽=0 ▽=0	GENERAL TOLERANCES (UNLESS SPECIFIED) <table><tr><td></td><td>mm</td><td>INCH</td></tr><tr><td>4 PLACES</td><td>± ---</td><td>± ---</td></tr><tr><td>3 PLACES</td><td>± ---</td><td>± ---</td></tr><tr><td>2 PLACES</td><td>± 0.13</td><td>± ---</td></tr><tr><td>1 PLACE</td><td>± 0.25</td><td>± ---</td></tr><tr><td>0 PLACE</td><td>± ---</td><td>± ---</td></tr></table>		mm	INCH	4 PLACES	± ---	± ---	3 PLACES	± ---	± ---	2 PLACES	± 0.13	± ---	1 PLACE	± 0.25	± ---	0 PLACE	± ---	± ---	DIMENSION STYLE MM ONLY		SCALE 4:1	DESIGN UNITS METRIC	 THIRD ANGLE PROJECTION	TITLE IMPACT 3P 85 OHM RAM RIGHT GUIDED ASSEMBLY SALES DRAWING molex	DOCUMENT NO. SD-170510-0004	SHEET NO. 2 OF 2
				mm	INCH																							
			4 PLACES	± ---	± ---																							
			3 PLACES	± ---	± ---																							
			2 PLACES	± 0.13	± ---																							
1 PLACE	± 0.25	± ---																										
0 PLACE	± ---	± ---																										
DRAWN BY MKRAUSE		DATE 2013/05/31																										
CHECKED BY TELO		DATE 2016/02/22																										
APPROVED BY TELO		DATE 2014/03/19																										
MATERIAL NO. SEE CHART		SIZE D		THIS DRAWING CONTAINS INFORMATION THAT IS PROPRIETARY TO MOLEX INCORPORATED AND SHOULD NOT BE USED WITHOUT WRITTEN PERMISSION																								