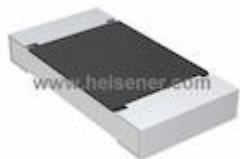


**CRCW20101K40FKEF Information**


For Reference Only

**Part Number** [CRCW20101K40FKEF](#)  
**Manufacturer** Vishay Dale  
**Category** Resistors  
[Chip Resistor - Surface Mount](#)  
**Description** RES SMD 1.4K OHM 1% 3/4W 2010  
**Package** 2010 (5025 Metric)  
 For the pricing/inventory/lead time, please contact us  
 Website: <https://www.heisener.com>  
 E-mail: [salesdept@heisener.com](mailto:salesdept@heisener.com)


[Request a Quote](#)
**Certified Quality**

Heisener's commitment to quality has shaped our processes for sourcing, testing, shipping, and every step in between. This foundation underlies each component we sell.


**CRCW20101K40FKEF Specifications**

Manufacturer Part Number	<a href="#">CRCW20101K40FKEF</a>
Manufacturer	Vishay Dale
Category	Resistors
	<a href="#">Chip Resistor - Surface Mount</a>
Package	2010 (5025 Metric)
Series	CRCW
Resistance	1.4 kOhms
Tolerance	±1%
Power (Watts)	0.75W, 3/4W
Composition	Thick Film
Features	Automotive AEC-Q200
Temperature Coefficient	±100ppm/°C
Operating Temperature	-55°C ~ 155°C
Package / Case	2010 (5025 Metric)
Supplier Device Package	2010
Size / Dimension	0.197" L x 0.098" W (5.00mm x 2.50mm)
Height - Seated (Max)	0.028" (0.70mm)
Number of Terminations	2
Failure Rate	-

[Report errors?](#)

## CRCW20101K40FKEF Guarantees



### Quality Guarantees

We provide 90 days warranty. \*

If the items you received were not in perfect quality, we would be responsible for your refund or replacement, but the items must be returned in their original condition.



### Service Guarantees

We guarantee 100% customer satisfaction.

Our experienced sales team and tech support team back our services to satisfy all our customers.

## CRCW20101K40FKEF Payment Methods



## CRCW20101K40FKEF Shipping Methods



If you have any question about CRCW20101K40FKEF, please do not hesitate to contact us!

Website: <https://www.heisener.com>

E-mail: [salesdept@heisener.com](mailto:salesdept@heisener.com)