

# Customer Information Sheet

DRAWING No.: M50-470XX45

SHEET 2 OF 2

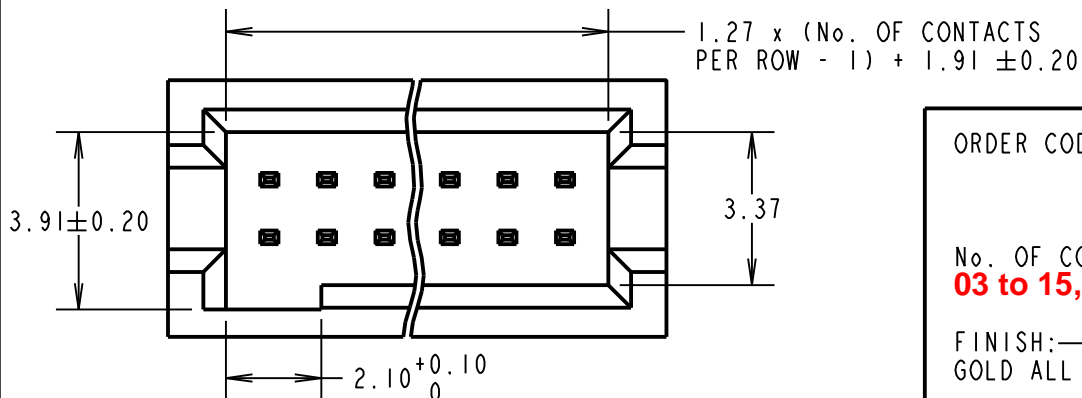
IF IN DOUBT - ASK

©

NOT TO SCALE

THIRD ANGLE PROJECTION

ALL DIMENSIONS IN mm



ORDER CODE:

**M50-470XX45**

No. OF CONTACTS PER ROW:

**03 to 15, 17, 20, 25**

FINISH:

GOLD ALL OVER CONTACT

## SPECIFICATIONS:

MATERIAL:

MOULDING = LCP UL94V-0, BLACK

CONTACT = COPPER ALLOY

FINISH:

CONTACT = GOLD

ELECTRICAL:

CURRENT RATING = 1A

VOLTAGE PROOF = 300V AC FOR ONE MINUTE

CONTACT RESISTANCE =  $20\text{m}\Omega$  MAX

INSULATION RESISTANCE =  $1000\text{M}\Omega$  MIN

MECHANICAL:

DURABILITY = 100 CYCLES MIN

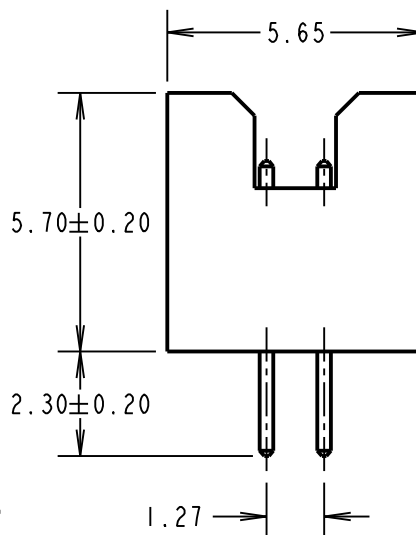
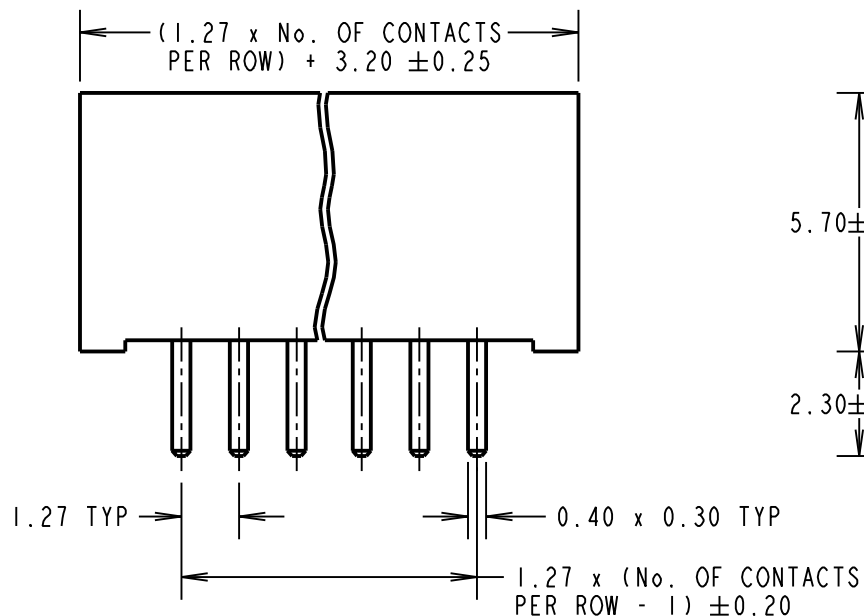
ENVIRONMENTAL:

OPERATING TEMPERATURE =  $-40^\circ\text{C}$  TO  $+105^\circ\text{C}$

PACKING:

TUBE

FOR COMPLETE SPECIFICATION, SEE COMPONENT SPECIFICATION C029XX (LATEST ISSUE).



## NOTES:

1. RECOMMENDED PCB HOLE SIZE =  $\varnothing 0.65 \pm 0.05\text{mm}$ .
2. ALL TOLERANCES ARE  $\pm 0.15$  UNLESS OTHERWISE STATED.

**OBSOLETE**

**No. of contacts per row = 16,  
18, 19, 21 to 24, 26 to 50  
Last Time Buy = 15th June  
2018**

SB	7	29.07.13	11873
NAME	ISS.	DATE	C/NOTE
APPROVED: S.BENNETT			
CHECKED: S.FLOWER			
DRAWN: J. ENRIGHT			
CUSTOMER REF.:			
ASSEMBLY DRG:			

**HARWIN**

www.harwin.com  
technical@harwin.com

THIS DRAWING AND ANY INFORMATION OR DESCRIPTIVE MATTER SET OUT HEREON ARE CONFIDENTIAL AND COPYRIGHT PROPERTY OF THE HARWIN GROUP AND MUST NOT BE DISCLOSED, LOANED, COPIED OR USED FOR MANUFACTURING, TENDERING OR FOR ANY OTHER PURPOSE WITHOUT THEIR WRITTEN PERMISSION.

## TOLERANCES

$X = \pm 1\text{mm}$   
 $X.X = \pm 0.25\text{mm}$   
 $X.XX = \pm 0.10\text{mm}$   
 $X.XXX = \pm 0.01\text{mm}$   
ANGLES =  $\pm 5^\circ$   
UNLESS STATED

MATERIAL:

SEE ABOVE

FINISH: SEE ABOVE

S/AREA:

mm<sup>2</sup>

TITLE:

1.27mm PITCH DIL  
VERTICAL PIN HEADER ASSY

DRAWING NUMBER:

**M50-470XX45**

SHT  
2 OF 2