

# IP68 SEALED 22mm PANEL ASSEMBLY

## SPECIFICATIONS

For complete specifications see [www.samtec.com?ACR-22](http://www.samtec.com?ACR-22)

### Terminal Material:

Brass

### Contact Material:

Brass/BeCu

### Operating Temp Range:

-40 °C to +105 °C

### Housing:

-P: Thermoplastic

-M: Zinc Alloy

### RoHS Compliant:

Yes

### Mates with:

ACP-22, ACPK-22



**Solutionator**  
DESIGN IN A MINUTE

- Easy sealed cable solutions
- Build a standard or flexible custom online
- Calculate performance, current rating, voltage drop
- Live chat with AccliMate™ engineers for custom options
- Variety of shells, pin sizes, signal, power, I/O interfaces
- Assembly and field kits available

### CURRENT RATING

LEAD STYLE	PINS POWERED	CCC per PIN
-01	30	2.0 A
-02	20	2.3 A
-03	8	8.3 A

For general reference only. See [www.samtec.com?ACR-22](http://www.samtec.com?ACR-22) for complete test data or contact [AccliMate@samtec.com](mailto:AccliMate@samtec.com) for applications requiring higher current carrying capacity.

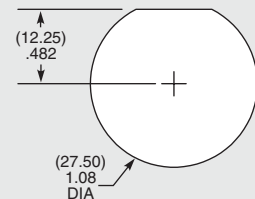
## DUST CAPS

- DCA-ACR-22-M-X (Metal)
- DCA-ACR-22-P-X (Plastic)



- Visit [sealedio.samtec.com](http://sealedio.samtec.com) for a complete list of sealed systems

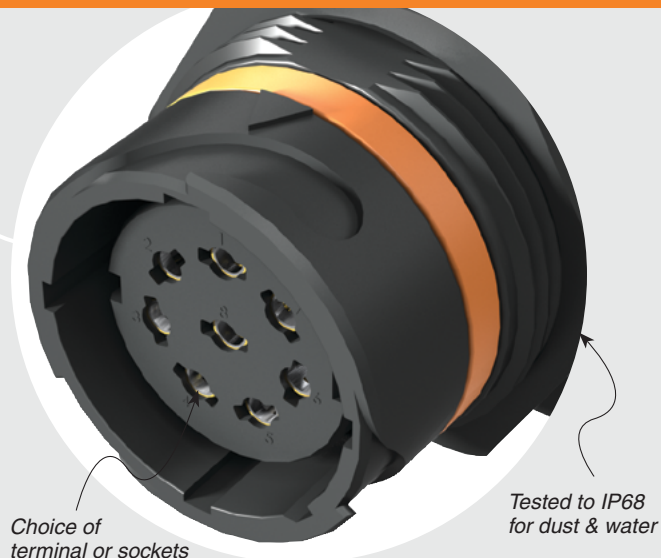
## PANEL OPENING



## ALSO AVAILABLE (MOQ Required)

- Other assembly lengths

**Note:** Some lengths, styles and options are non-standard, non-returnable.



ACR	22	LEAD STYLE	PLATING	LENGTH	END 1	END 2	HOUSING MATERIAL	KEYING OPTIONS
		<b>-01</b> = 1.0 mm DIA (30) terminals or sockets (24 AWG)  <b>-02</b> = 1.0 mm DIA (20) terminals or sockets (24 AWG)  <b>-03</b> = 1.5 mm DIA (8) terminals or sockets (16 AWG)	<b>-G</b> = 10 μ" (0.25 μm) Gold over 50 μ" (1.27 μm) Ni on contact	<b>"XX.XX"</b> = Length in meters (00.25 m min. to 50.00 m max.) Standard lengths	<b>-T</b> = Terminal  <b>-S</b> = Socket	<b>-P</b> = Plastic  <b>-M</b> = Metal	<b>-1</b> = Orange, 45°	
							<b>-BC</b> = Blunt Cut  <b>-S1</b> = Connector determined by lead style. (Specify LEAD STYLE from chart)	

LEAD STYLE	-S1 END 2	MATES WITH -S1
-01	MMSD (24 AWG)	IPL1
-02	MMSD (24 AWG)	IPL1
-03	MPSS (16 AWG)	MPT

Due to technical progress, all designs, specifications and components are subject to change without notice.

[WWW.SAMTEC.COM](http://WWW.SAMTEC.COM)

All parts within this catalog are built to Samtec's specifications. Customer specific requirements must be approved by Samtec and identified in a Samtec customer-specific drawing to apply.