

SECTION F-F

DIMENSIONS					
POSITION	A ± 0.20	B $\begin{smallmatrix} +0.15 \\ -0.05 \end{smallmatrix}$	C ± 0.20	D ± 0.23	E ± 0.30
36	6	7.65	12.30	25.00	34.8
64	20	21.65	26.30	39.00	48.8
98	37	38.65	43.30	56.00	65.8
164	70	71.65	76.30	89.00	98.8

DIMENSION "K"	DIMENSION "L"	PCB THICKNESS (DIM "J")
1.40	2.50	1.80 MM
1.60	2.50	2.08 MM
1.90	2.50	2.30 MM

NOTES:

1. MATERIAL:
 - 1.1 HOUSING: THERMOPLASTIC, HIGH TEMP.,
UL94V-0;
 - 1.2. CONTACTS: COPPER ALLOY.
2. CONTACT FINISH:
SELECTED GOLD PLATING ON CONTACT AREA.
3. NO TIE BAR PERMITTED FROM CARD EDGE TO LEADING EDGE OF PAD FOR PINS A1 AND PIN No. "F"
4. CHAMFER EDGES MUST BE FREE OF CUTTING EDGE.
5. FREQUENCY & LOCATION AT SUPPLIER DISCRETION. RIDGE MAY BE CONTINUOUS WITH NO BREAKS.
6. PRODUCT SPEC.: GS-12-233
PACKING SPEC: GS-14-910
7. THE HSG WILL WITHSTAND EXPOSURE TO 260 +/-5C SOLDER BATH TEMP. FOR 5 SEC. IN A REFLOW SOLDER APPLICATION.

PRODUCT NUMBER CODE

10069690

HOUSING COLOR OPTIONS

0-NATURAL
1-BLACK

RESERVE

TERMINAL PLATING OPTIONS

0-50u" Ni UNDERPLATE
30u" Au CONTACT AREA
100u" MATT TIN TAIL AREA
1-50u" Ni UNDERPLATE
15u" Au CONTACT AREA
100u" MATTE TIN TAIL AREA
2-50u" Ni UNDERPLATE
GOLD FLASH CONTACT AREA
100u" MATT TIN TAIL AREA

X LF
T T LEAD FREE

PACKAGING OPTIONS

T:TRAY PACKAGING (ONLY 98P WITH CAP; 36P,64P,164P WITHOUT CAP)
P:TRAY PACKAGING WITH CAP (FOR 36P,64P AND 164P ONLY)

POS OPTIONS

0-36
1-64
2-98
3-164

PCB THICKNESS OPTION

0-	2.08	MM
1-	2.30	MM
2-	1.80	MM

mat'l. code				surface		tolerance		projection		product family	
-				- ✓		ASME_Y14.5				PCI_EXPRESS	
lfr		ecn no		dr		date		tolerances unless otherwise specified			
A		T07-1077		S.Lin		03/13/07				title	
B		T07-1098		S.Lin		06/08/07				PCI_EXPRESS_CARD_EDGE_GEN3	
C		T00-1001		J.H		1/3/08				STRADDLE_MOUNT_ASS'Y	
D		DG-23735		LZH		4/05/16				dwg no	
E		DG-30520		LZH		6/21/18		sheet 1 of 4		size	
										10069690	
										A4	
										type	
										CUSTOMER Drawing	
sheet index		revision sheet		E							

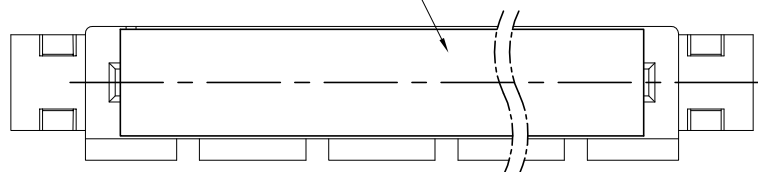
NOTES:

1. MATERIAL:

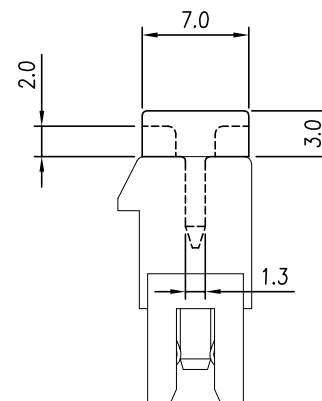
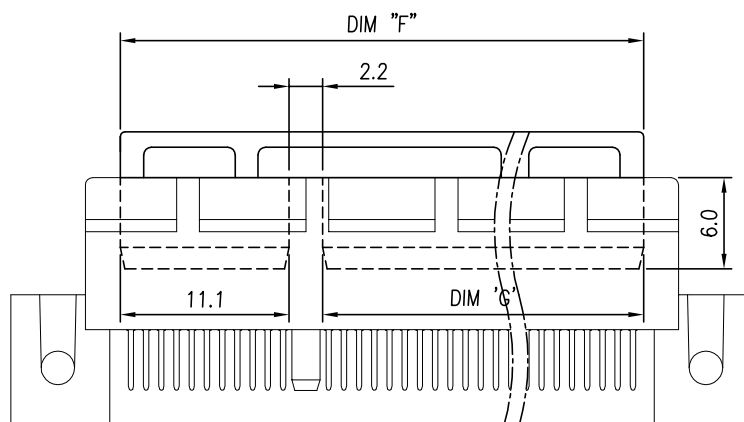
INSERT CAP: THERMOPLASTIC, HIGH TEMP.,
UL94V-0; BLACK COLOR.

2. THE INSERT CAP SHALL BE REMOVED OUT
AFTER RE-FLOWED PROCESS.

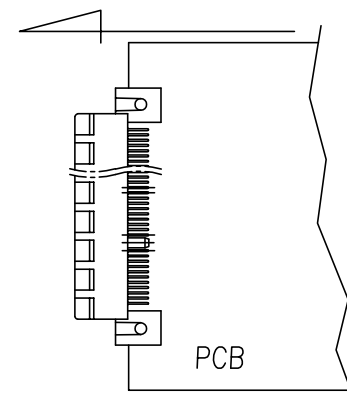
INSERT CAP



DIMENSIONS		
POSITION	F	G
36	20.4	7.1
64	34.4	21.1
98	51.4	38.1
164	84.4	71.1

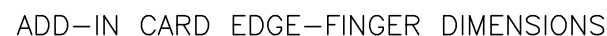


mat'l. code				surface	tolerance	projection	product family	
-				-	ASME_Y14.5		PCI_EXPRESS	
ltr	ecn no	dr	date	tolerances unless otherwise specified			title	
				angles	.0±0.30		PCI_EXPRESS_CARD_EDGE_GEN3	
				±2'	.00±0.20		STRADDLE_MOUNT_ASS'Y	
					.000±0.10	scale N/A	dwg no	
				dr	ZHENHUA_LIU	2016-03-25	sheet 2 of 4	
				enr	ZHENHUA_LIU	2016-03-25	size	
				chr	STONE_LI	2016-03-25	10069690	
				app	PM_ZHENG	2016-03-25	type	
sheet index				revision	E		CUSTOMER Drawing	
				sheet				



RECOMMEND OF REFLOW DIRECTION

[illegible]



mat'l. code					surface		tolerance		projection		product family									
-					-		ASME_Y14.5				PCI_EXPRESS									
ltr ecn no dr date					tolerances unless otherwise specified						title									
					angles		linear		MM		PCI_EXPRESS_CARD_EDGE_GEN3									
							.0±0.20				STRADDLE_MOUNT_ASS'Y									
							.00±0.13													
					±2°		.000±0.05		scale N/A											
					dr		ZHENHUA_LIU		2016-03-25		dwg no									
					engr		ZHENHUA_LIU		2016-03-25		sheet 4 of 4									
					chr		STONE_LI		2016-03-25		10069690									
					appd		PM_ZHENG		2016-03-25		A4									
											type									
											CUSTOMER Drawing									
sheet index					revision sheet					E										