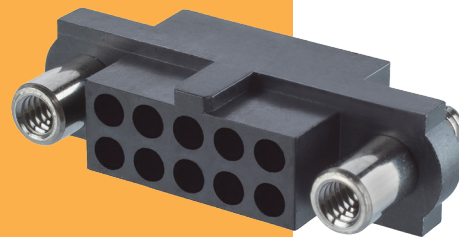


Datamate J-Tek Connectors

Female Crimp Housing - Reverse Fix

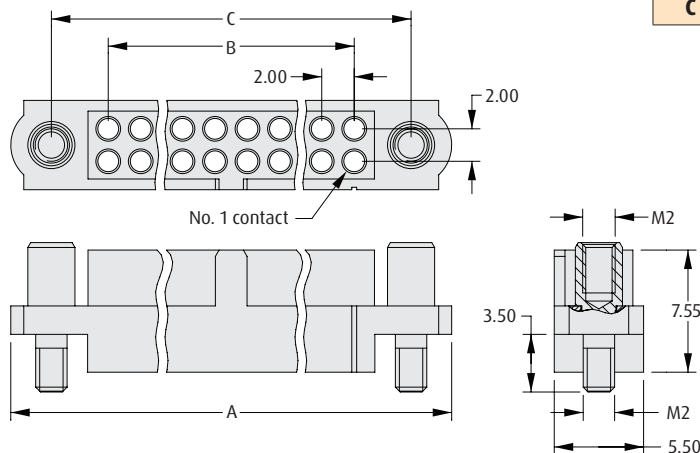
- Compatible with all female signal barrel crimp contacts, including T-Contact shown on previous page.
- Use insertion tool to insert crimped contacts into rear of connector housing: **order code Z80-280**.
- Jackscrews are supplied already assembled to housing.
- Connectors mate with Datamate J-Tek male connectors with compatible Reverse Fix jackscrews.



REVERSE FIX JACKSCREWS

CALCULATION

A	$B + 12$
B	Total no. of contacts - 2
C	$B + 7$



HOW TO ORDER

M80 - 41 5 XX 98

SERIES CODE

JACKSCREW TYPE

5

Reverse Fix Jackscrew

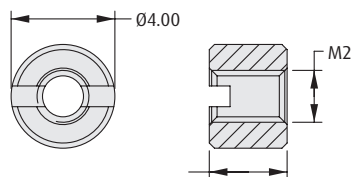
TOTAL NO. OF CONTACTS

04 to 50

HARDWARE FOR PANEL MOUNT STUD

Order separately from connector

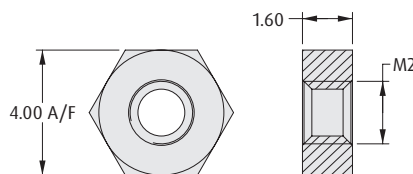
Slotted Board Mount Nut



ORDER CODE

M80-2130000B

Hexagonal Board Mount Nut



ORDER CODE

M80-2430000B

All dimensions in mm.