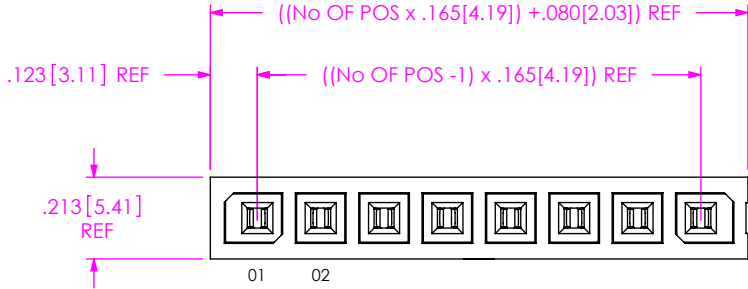


DO NOT
SCALE FROM
THIS PRINT



- IPBS-1XX-XX-XX-S-XX**
- No OF POSITIONS**
-02 THRU -10 (PER ROW)
 - LEAD STYLE**
 - 01: STANDARD POWER, THROUGH HOLE (USE C-168-01-SP-XX)(SEE FIG. 1)
 - 02: STANDARD POWER, SURFACE MOUNT (USE C-168-02-SP-XX)(SEE FIG. 2, SHEET 2)
 - H1: HIGH POWER, THROUGH HOLE (USE C-168-01-HP-XX)(SEE FIG. 1)(SEE NOTE 9)
 - H2: HIGH POWER, SURFACE MOUNT (USE C-168-02-HP-XX)(SEE FIG. 2, SHEET 2) (SEE NOTE 9)
 - OPTION**
 - GP: GUIDE POSTS (USE IPBS-XX-S-GP) [SEE FIG. 3, SHT 2]
 - ROW SPECIFICATION**
 - S: SINGLE (USE IPBS-XX-S)
 - PLATING SPECIFICATION**
 - T: TIN (USE C-168-XX-XX-T)
 - TM: MATTE TIN (USE C-168-XX-XX-T)

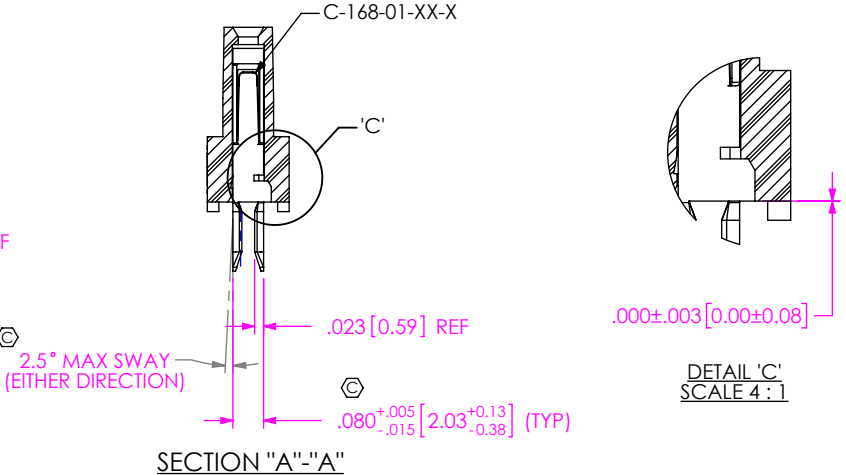
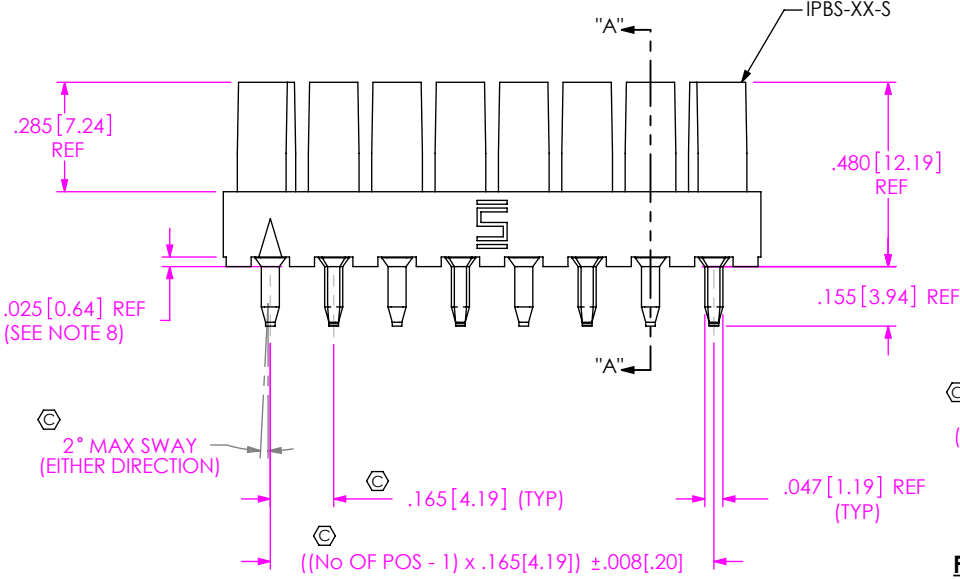


FIG. 1
IPBS-108-X1-XX-S SHOWN

- NOTES:**
1. C REPRESENTS A CRITICAL DIMENSION.
 2. COPLANARITY (FOR -X2): SEE TABLE 1.
 3. BURR ALLOWANCE: .003[.08] MAX.
 4. PARTS TO BE MOLDED TO POSITION.
 5. MINIMUM PUSHOUT FORCE: 1 LB[4.45 N].
 6. MEASURED AT THE LOWEST POINT.
 7. ALL PIN TO PIN DIMENSIONS TO BE MEASURED FROM TIP TO TIP.
 8. TWO POSITION PART WILL HAVE STANDOFFS ON ENDS.
 9. AVAILABLE TO EXISTING CUSTOMERS ONLY. DO NOT DESIGN IN AS OF REVISION D.

PACKAGING VIEWS

-01, -H1 -02, -H2 -01-GP, -H2-GP

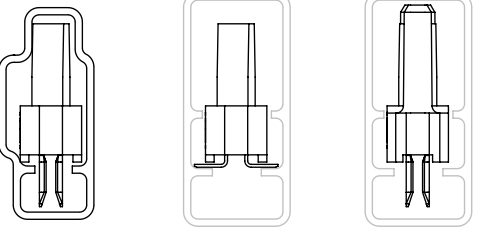


TABLE 2		
LEAD / OPTION	PACKAGING TUBE	PLUG
-X1-GP, X2, -X2-GP	PT-1-24-01-152	TP-07
-X1	PT-1-24-02-30	TP-03

NOTE: PARTS TO BE LOADED WITH POSITION #1 IN SAME DIRECTION AS ARROW ON TUBE

UNLESS OTHERWISE SPECIFIED, DIMENSIONS ARE IN INCHES.

TOLERANCES ARE:

DECIMALS	ANGLES
.XX: $\pm .01$ [.3]	2°
.XXX: $\pm .005$ [.13]	
.XXXX: $\pm .0020$ [.051]	

PROPRIETARY NOTE

THIS DOCUMENT CONTAINS INFORMATION CONFIDENTIAL AND PROPRIETARY TO SAMTEC, INC. AND SHALL NOT BE REPRODUCED OR TRANSFERRED TO OTHER DOCUMENTS OR DISCLOSED TO OTHERS OR USED FOR ANY PURPOSE OTHER THAN THAT WHICH IT WAS OBTAINED WITHOUT THE EXPRESSED WRITTEN CONSENT OF SAMTEC, INC.

samtec

520 PARK EAST BLVD, NEW ALBANY, IN 47150
PHONE: 812-944-6733 FAX: 812-948-5047
e-Mail: info@SAMTEC.com code: 55322

DESCRIPTION:
.165[4.19] SINGLE ROW SOCKET ASSEMBLY

DWG. NO.
IPBS-1XX-XX-XX-S-XX

BY: DEAN P 5/12/2003 SHEET 1 OF 2

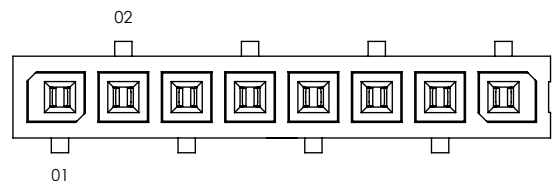
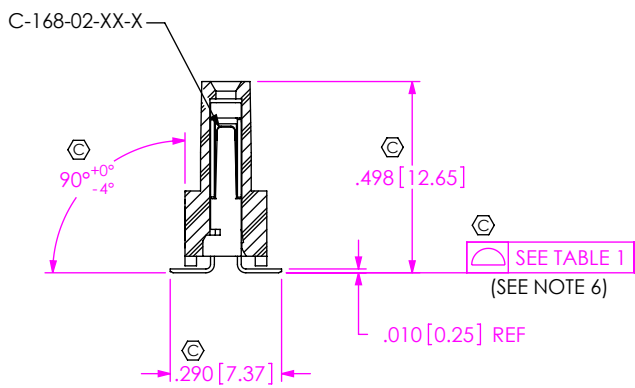
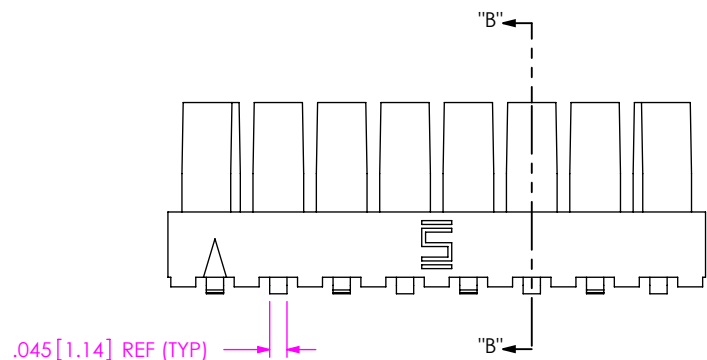


FIG. 2
-X2: SURFACE MOUNT
IPBS-108-X2-XX-S SHOWN
[DIFFERENT AS SHOWN, OTHERWISE SAME AS FIG. 1]

TABLE 1	
No OF POSITIONS	COPLANARITY
-02 THRU -10	.004[.10]



SECTION "B"- "B"

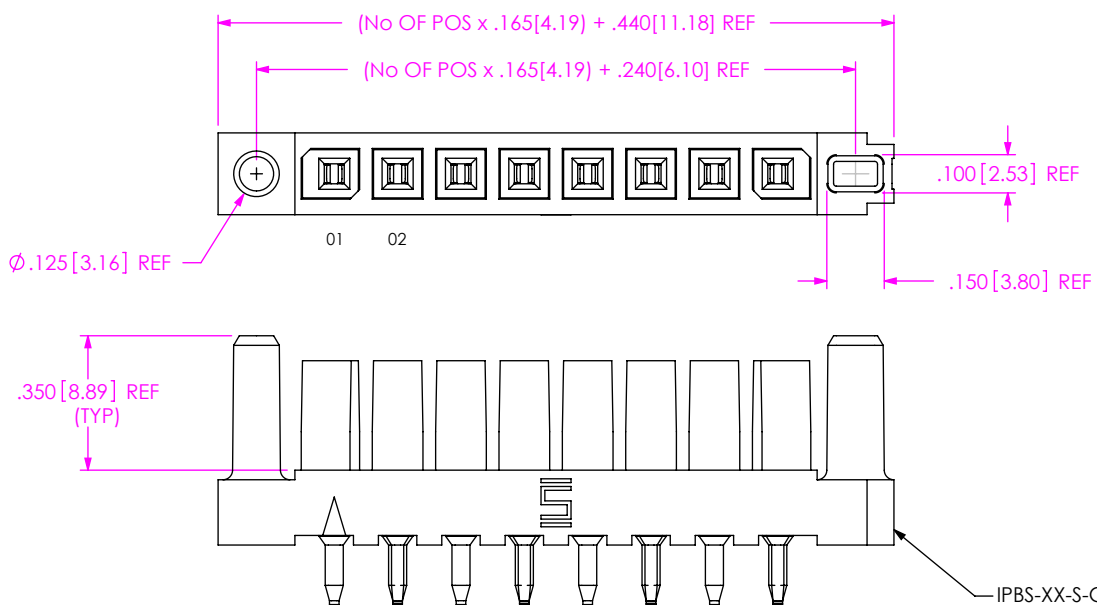


FIG. 3
-GP: GUIDE POSTS
IPBS-108-X1-XX-S-GP SHOWN
[DIFFERENT AS SHOWN, OTHERWISE SAME AS FIG. 1]

PROPRIETARY NOTE
THIS DOCUMENT CONTAINS INFORMATION
CONFIDENTIAL AND PROPRIETARY TO
SAMTEC, INC. AND SHALL NOT BE REPRODUCED
OR TRANSFERRED TO OTHER DOCUMENTS OR
DISCLOSED TO OTHERS OR USED FOR ANY
PURPOSE OTHER THAN THAT WHICH IT WAS
OBTAINED WITHOUT THE EXPRESSED WRITTEN
CONSENT OF SAMTEC, INC.

DO NOT SCALE DRAWING

SHEET SCALE: 2:1

520 PARK EAST BLVD, NEW ALBANY, IN 47150
PHONE: 812-944-6733 FAX: 812-948-5047
e-Mail: info@SAMTEC.com code: 55322

DESCRIPTION:
.165[4.19] SINGLE ROW SOCKET ASSEMBLY

DWG. NO.
IPBS-1XX-XX-XX-S-XX

BY: DEAN P 5/12/2003 SHEET 2 OF 2