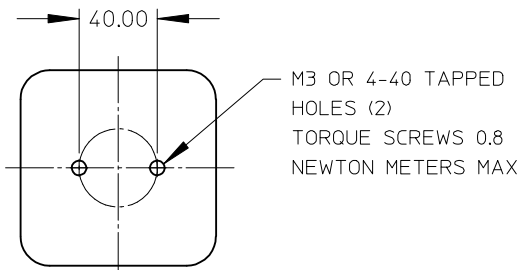
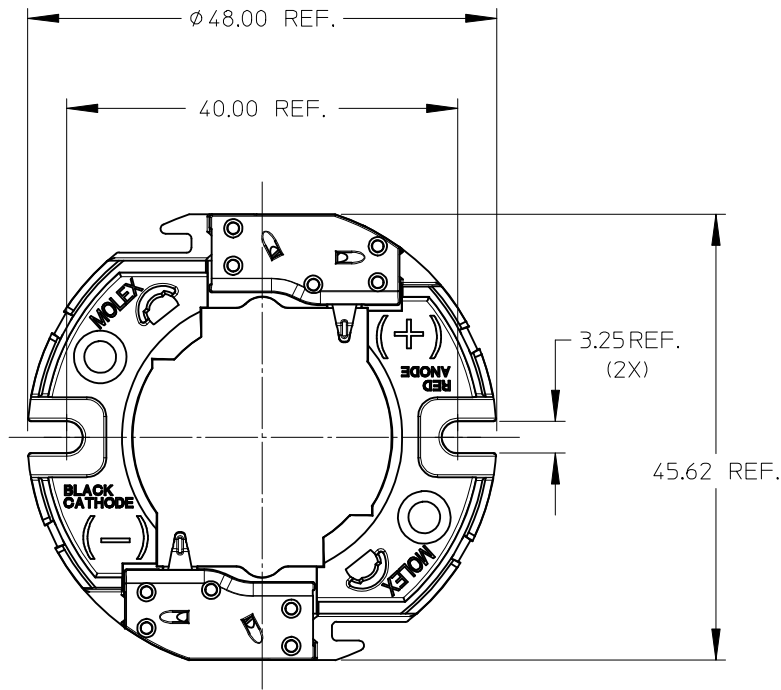
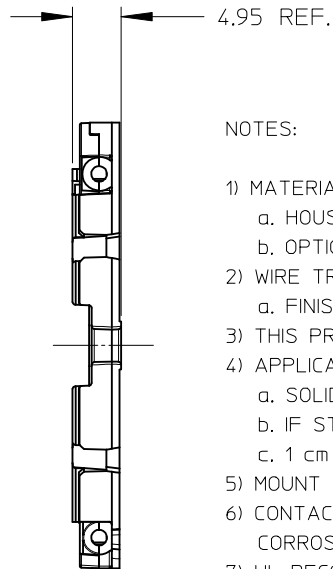


10	9	8	7	6	5	4	3	2	1
PART NUMBER	DESCRIPTION	SEE SHEET							
180150-0000	HOLDER WITHOUT LENS	3							
180150-0001	HOLDER WITH LENS	3							
180152-0000	COVER LENS ONLY	3							
N/A	REFLECTOR OPTION (LEDIL)	4							

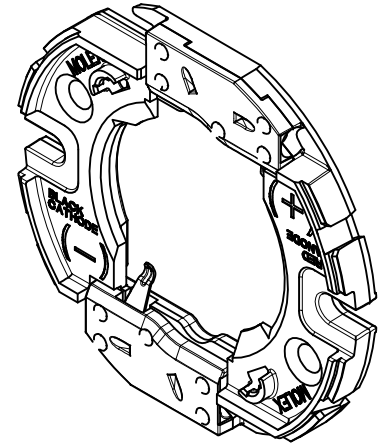


RECOMMENDED MOUNTING DIMENSIONS (NTS)



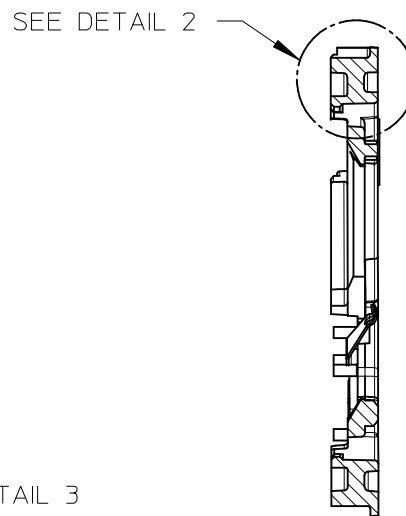
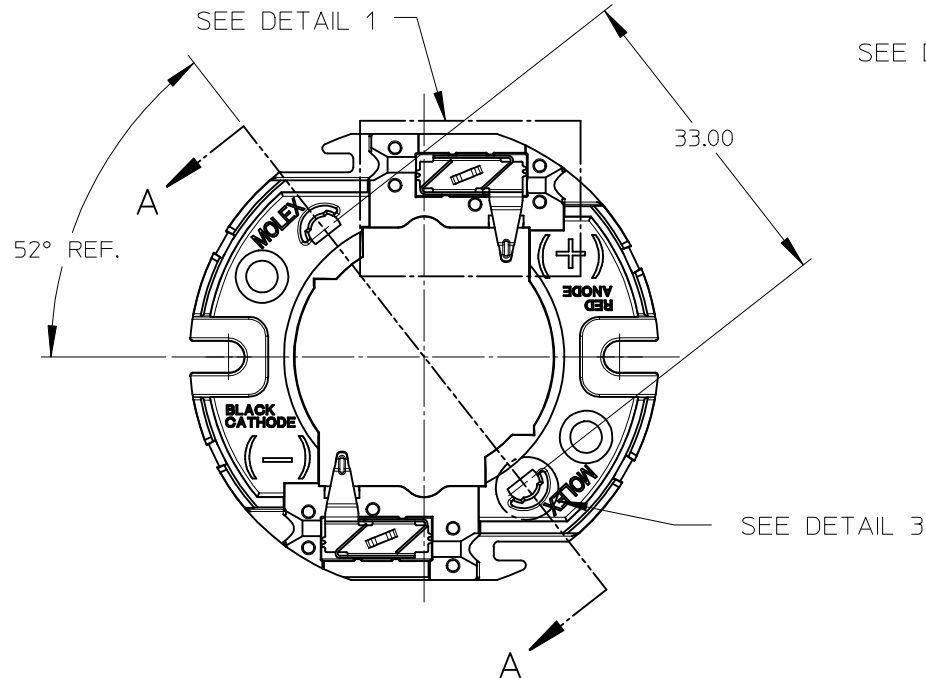
#### NOTES:

- MATERIALS:
  - HOUSING AND CAPS: NATURAL COLOR PA66 NYLON 25% GF UL94V-0
  - OPTIONAL SNAP ON COVER LENS: CLEAR POLYCARBONATE UL94HB
- WIRE TRAP TERMINALS: COPPER ALLOY
  - FINISH: 2.50 MICRONS (100  $\mu$  in.) SILVER OVER 1.25 MICRONS (50  $\mu$  in.) NICKEL
- THIS PRODUCT IS ELV AND ROHS COMPLIANT
- APPLICABLE WIRE GAUGE - 18 OR 20 AWG
  - SOLID WIRE IS RECOMMENDED
  - IF STRANDED WIRE IS USED, PRE-TINNED IS RECOMMENDED
  - 1 cm STRIP LENGTH RECOMMENDED
- MOUNT HOLDER USING M3 OR 4-40 SCREWS (2), 0.8 NEWTON METERS MAX TORQUE
- CONTACT AREA OF TEMINAL HAS AN ENVIRONMENTAL BARRIER/LUBRICANT FOR CORROSION RESISTANCE
- UL RECOGNIZED TO UL 496
- c-UL RECOGNIZED TO CSA-22.2 No. 43 (2008)
- RATED 600V
- UL FILE NUMBER E345583

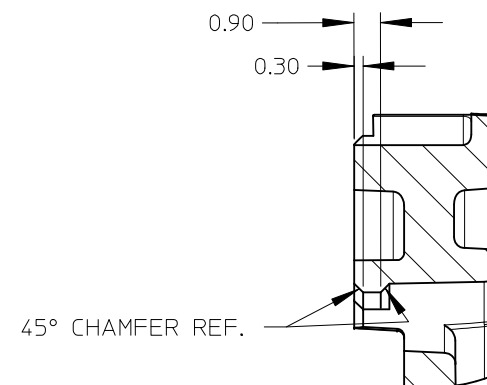
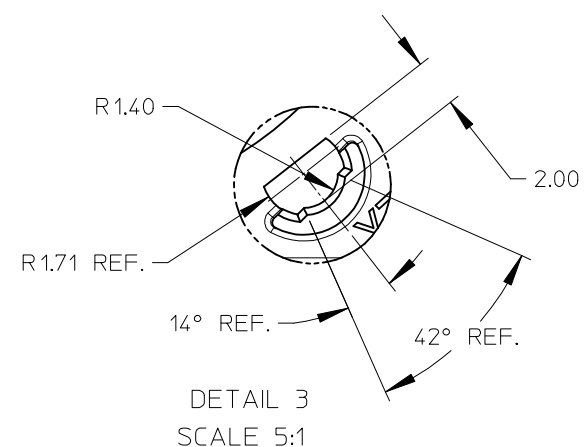


ENTER DESCRIPTION EC NO: SSL2011-0088 DRAWN: CCARRANZA 2011/05/31 CHKD: APPR: DMCGOWAN 2011/05/31 A4		DESCRIPTION REV	QUALITY SYMBOLS <div><div><div><div><div></div></div></div><div><div><div></div></div></div><div><div><div></div></div></div></div><div><div><div></div></div></div><div><div><div></div></div></div></div> <div><div><div></div></div></div> <div><div><div></div></div></div>	GENERAL TOLERANCES (UNLESS SPECIFIED)		DIMENSION STYLE MM ONLY		SCALE 2:1	DESIGN UNITS METRIC	THIRD ANGLE PROJECTION <div><div><div></div></div><div><div></div></div></div>					
				<div><div>mm</div><div>INCH</div></div>		DRAWN BY CCARRANZA		DATE 2010/08/24		TITLE LED HOLDER FOR BRIDGELUX ES ARRAY					
				4 PLACES ± --- ± ---		CHECKED BY		DATE							
				3 PLACES ± --- ± ---											
				2 PLACES ± 0.13 ± ---		APPROVED BY		DATE		MOLEX INCORPORATED <div><div><div></div></div></div>					
				1 PLACE ± 0.25 ± ---		DMCGOWAN		2010/10/12							
				ANGULAR ±1/2°		MATERIAL NO.		DOCUMENT NO.						SHEET NO. 1 OF 4	
				DRAFT WHERE APPLICABLE MUST REMAIN WITHIN DIMENSIONS		SIZE B		THIS DRAWING CONTAINS INFORMATION THAT IS PROPRIETARY TO MOLEX INCORPORATED AND SHOULD NOT BE USED WITHOUT WRITTEN PERMISSION							

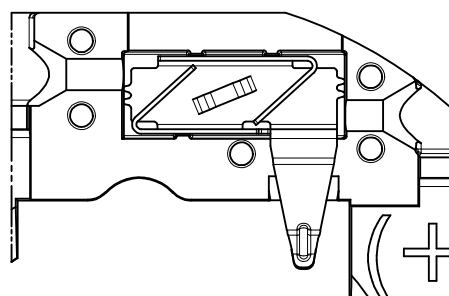
WIRE TRAP CAPS ARE REMOVED FROM FRONT VIEW FOR CLARITY



SECTION A-A



LENS TO HOLDER SNAP-FIT DETAIL  
DETAIL 2 SCALE 6:1



VIEW OF TWO-WAY WIRE TRAP

WIRE TRAPS WILL ACCOMODATE  
EITHER 18 OR 20 GAUGE WIRE

DETAIL 1 SCALE 4:1

ENTER DESCRIPTION EC NO: SSL2011-0088 DRAWN:CCARRANZA 2011/05/31 CHKD: APPR:DMCGOWAN 2011/05/31 REV A4	DESCRIPTION	QUALITY SYMBOLS  ▽=0 ▽=0 ▽=0	GENERAL TOLERANCES (UNLESS SPECIFIED)		DIMENSION STYLE MM ONLY		SCALE 2:1	DESIGN UNITS METRIC	THIRD ANGLE PROJECTION			
				mm	INCH	DRAWN BY CCARRANZA	DATE 2010/08/24	TITLE LED HOLDER FOR BRIDGELUX ES ARRAY				
			4 PLACES	± ---	± ---	CHECKED BY		DATE				
			3 PLACES	± ---	± ---	APPROVED BY DMCGOWAN		DATE 2010/10/12		MOLEX INCORPORATED		
			2 PLACES	± 0.13	± ---	MATERIAL NO.		DOCUMENT NO.		SHEET NO.		
			1 PLACE	± 0.25	± ---	SEE CHART		SD-180150-000		2 OF 4		
			ANGULAR ±1/2°		SIZE B		THIS DRAWING CONTAINS INFORMATION THAT IS PROPRIETARY TO MOLEX INCORPORATED AND SHOULD NOT BE USED WITHOUT WRITTEN PERMISSION					
			DRAFT WHERE APPLICABLE MUST REMAIN WITHIN DIMENSIONS									

10 9 8 7 6 5 4 3 2 1

F

E

D

C

B

A

F

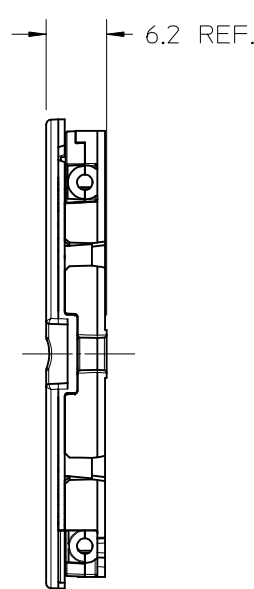
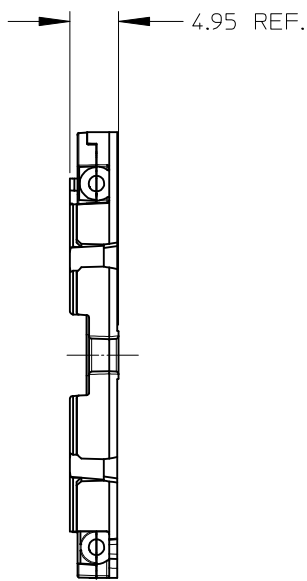
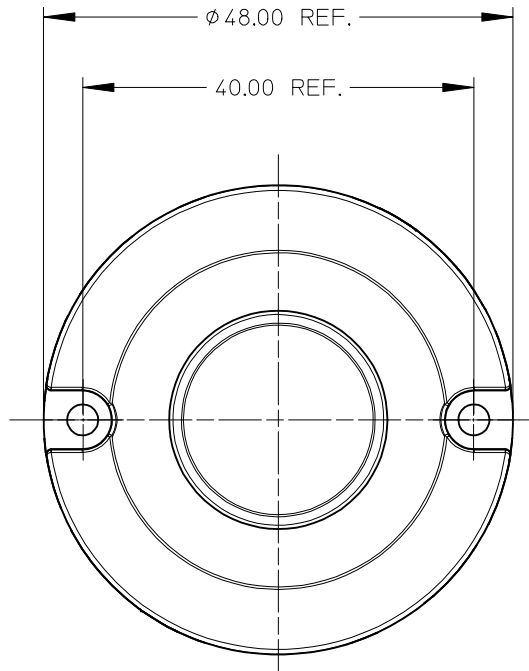
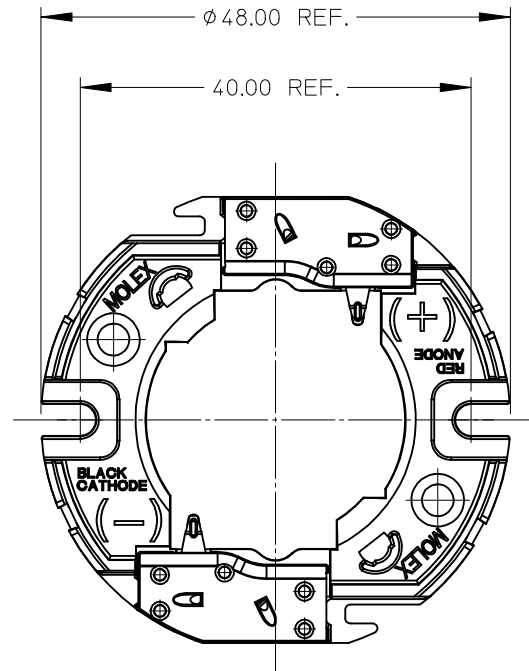
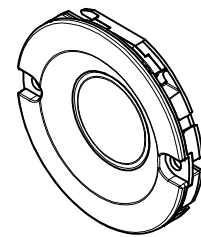
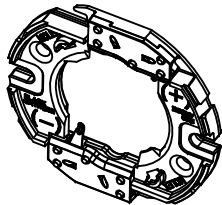
E

D

C

B

A



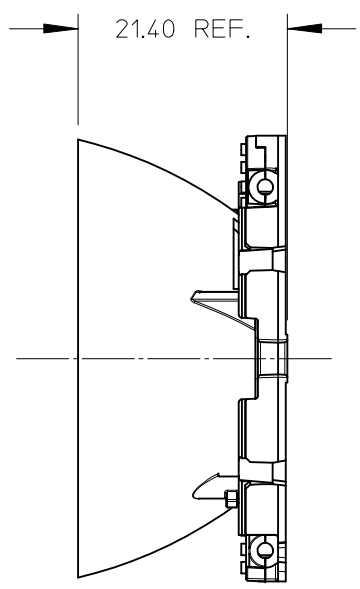
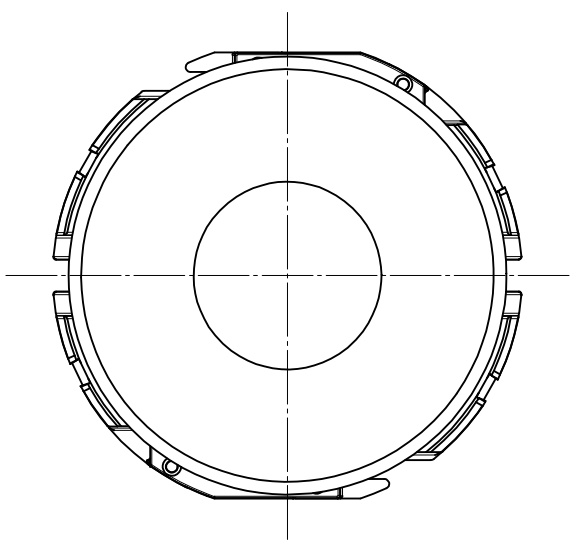
LED HOLDER PART NUMBER 180150-0000

LED HOLDER SHOWN WITH OPTIONAL CLEAR COVER LENS  
MOLEX INDIVIDUAL COVER LENS PART NUMBER IS 180152-0000

ENTER DESCRIPTION EC NO: SSL2011-0088 DRAWN: CCARRANZA 2011/05/31 CHKD: APPR: DMCGOWAN 2011/05/31 REV A4	DESCRIPTION	QUALITY SYMBOLS <div><div>▽<sub>A</sub>=0</div><div>▽<sub>B</sub>=0</div><div>▽<sub>C</sub>=0</div></div>	GENERAL TOLERANCES (UNLESS SPECIFIED)		DIMENSION STYLE MM ONLY		SCALE 2:1	DESIGN UNITS METRIC	THIRD ANGLE PROJECTION			
				mm	INCH	DRAWN BY CCARRANZA	DATE 2010/08/24	TITLE LED HOLDER FOR BRIDGELUX ES ARRAY				
			4 PLACES	± ---	± ---	CHECKED BY	DATE					
			3 PLACES	± ---	± ---	MOLEX INCORPORATED						
			2 PLACES	± 0.13	± ---							
			1 PLACE	± 0.25	± ---							
			ANGULAR ±1/2°			APPROVED BY DMCGOWAN	DATE 2010/10/12	DOCUMENT NO. SD-180150-000				
DRAFT WHERE APPLICABLE MUST REMAIN WITHIN DIMENSIONS			MATERIAL NO.		SHEET NO. 3 OF 4							
			SIZE B		THIS DRAWING CONTAINS INFORMATION THAT IS PROPRIETARY TO MOLEX INCORPORATED AND SHOULD NOT BE USED WITHOUT WRITTEN PERMISSION							

10 9 8 7 6 5 4 3 2 1

SHOWN WITH OPTIONAL REFLECTOR  
SOLD SEPARATELY BY LEDIL @ [www.ledil.com](http://www.ledil.com)



ENTER DESCRIPTION EC NO: SSL2011-0088 DRAWN: CCARRANZA 2011/05/31 CHKD: APPR: DMCGOWAN 2011/05/31 A4	DESCRIPTION REV	QUALITY SYMBOLS <div>F<sub>A</sub>=0</div> <div>F<sub>G</sub>=0</div> <div>F<sub>P</sub>=0</div>	GENERAL TOLERANCES (UNLESS SPECIFIED)		DIMENSION STYLE MM ONLY		SCALE 4:1	DESIGN UNITS METRIC	THIRD ANGLE PROJECTION				
				mm	INCH	DRAWN BY CCARRANZA	DATE 2010/08/24	TITLE LED HOLDER FOR BRIDGELUX ES ARRAY					
			4 PLACES	± ---	± ---	CHECKED BY	DATE						
			3 PLACES	± ---	± ---	APPROVED BY DMCGOWAN		DATE 2010/10/12	MOLEX INCORPORATED				
			2 PLACES	± 0.13	± ---								
			1 PLACE	± 0.25	± ---	MATERIAL NO. SEE CHART		DOCUMENT NO. SD-180150-000	SHEET NO. 4 OF 4				
			ANGULAR ±1/2°										
DRAFT WHERE APPLICABLE MUST REMAIN WITHIN DIMENSIONS			THIS DRAWING CONTAINS INFORMATION THAT IS PROPRIETARY TO MOLEX INCORPORATED AND SHOULD NOT BE USED WITHOUT WRITTEN PERMISSION										

9 8 7 6 5 4 3 2 1