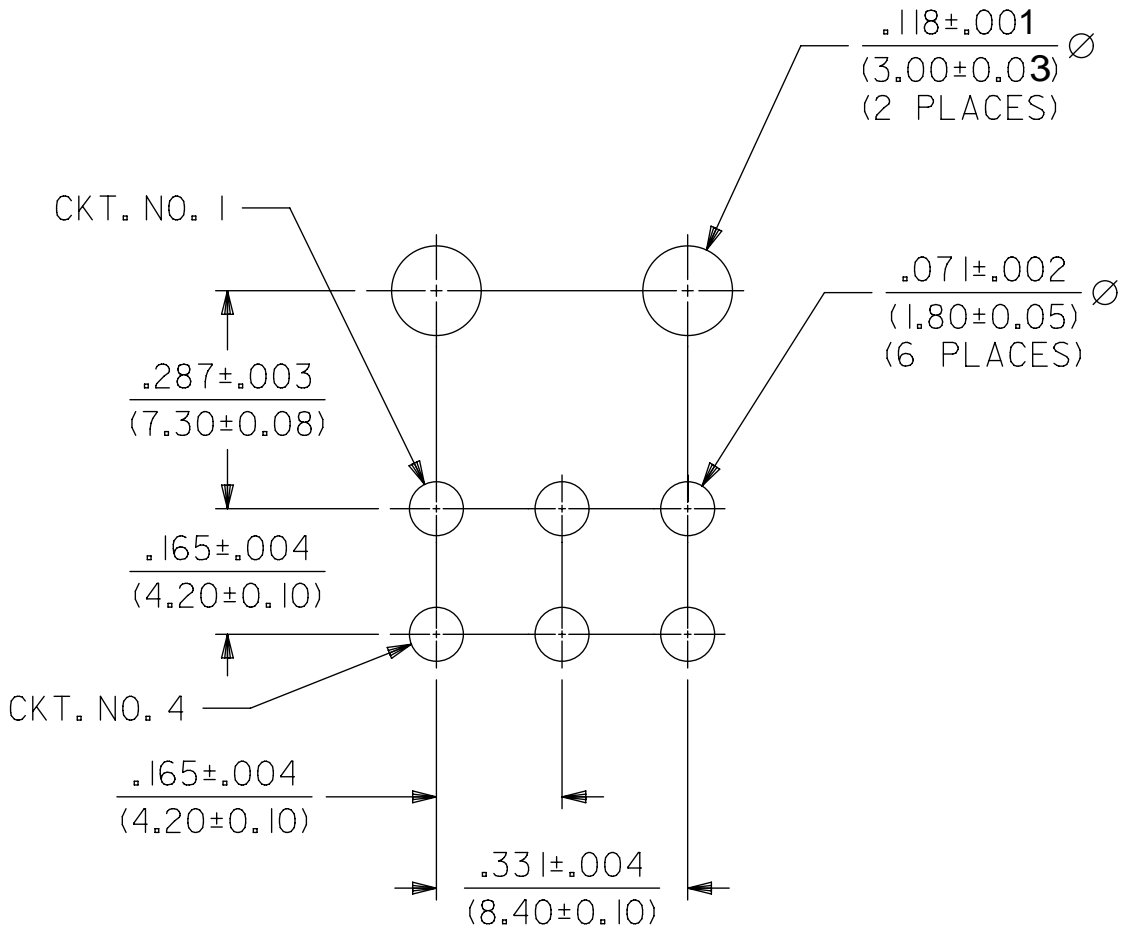
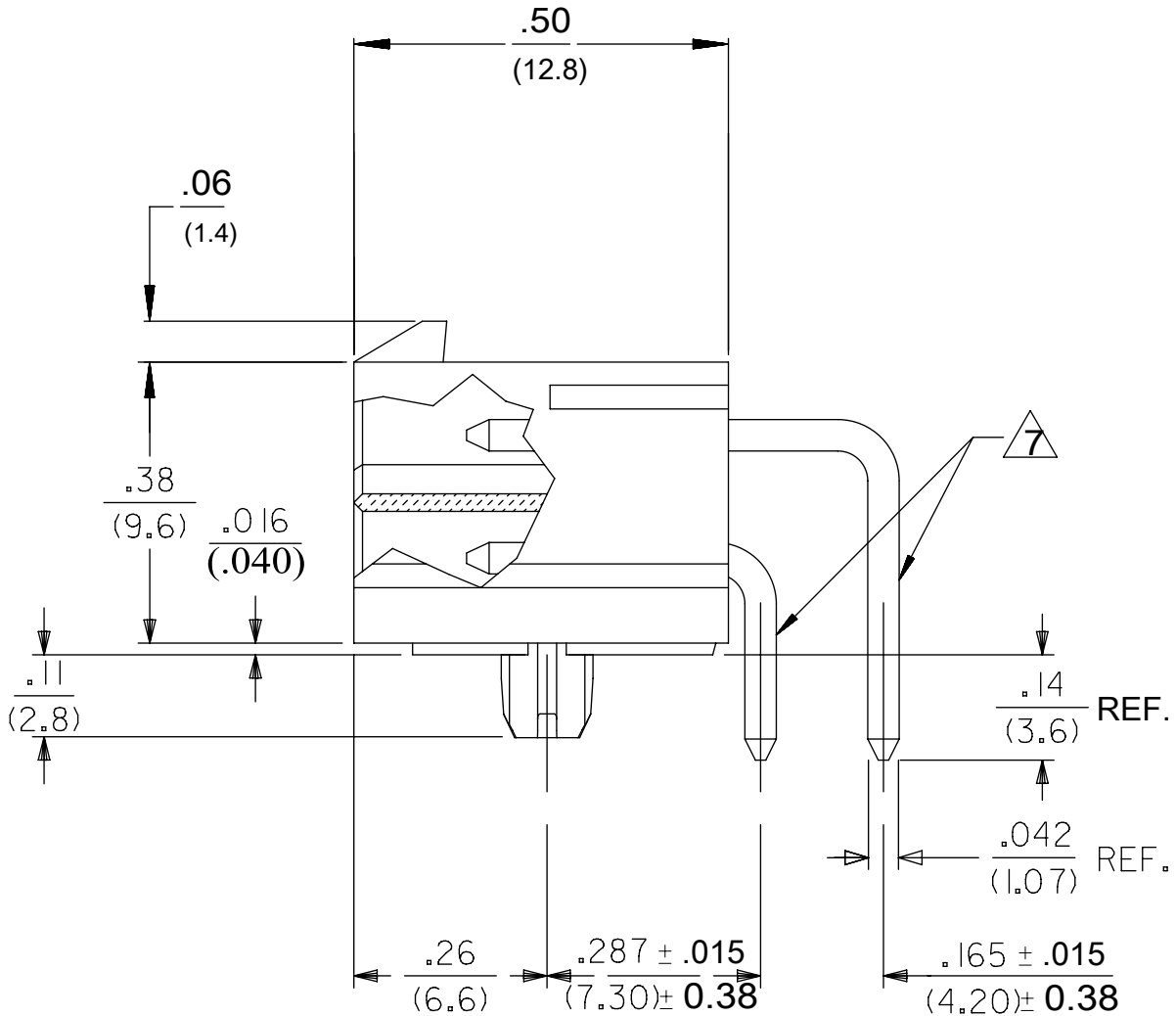
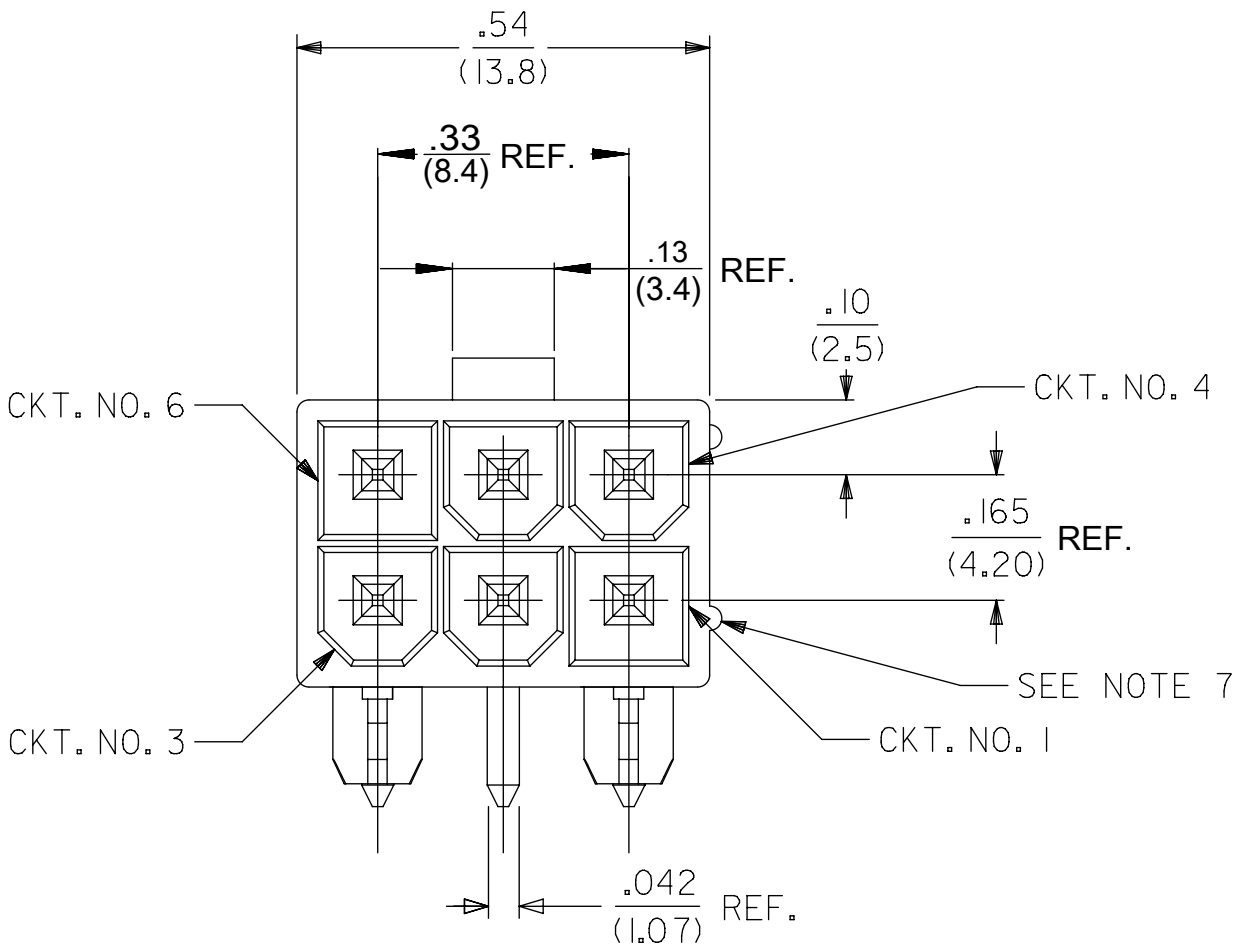


- NOTES:
- 1) MATERIAL:
HOUSING: LCP, UL94 V-0, COLOR: BLACK
TERMINALS: BRASS
 - 2) TERMINAL FINISH:
.000100/(.00254) MIN. MATTE TIN OVER
.000050/(.00127) MIN. NICKEL OVERALL.
 - 3) PRODUCT SPECIFICATION: PS-45558-001
 - 4) PACKAGING: PER PK-5569-002
 - 5) PARTS MATE WITH MINI-FIT JR. RECEPTACLE 455590002.
 - 6) FULL RIB INDICATES CIRCUIT NO. 1.
 - 7) FORMING MARKS ON PINS ARE ACCEPTABLE
 - 8) PARTS ARE NOT TO BE MATED OR UNMATED WHILE CIRCUITS ARE LIVE.
 - 9) PEGS ARE DESIGNED FOR A PRESS FIT INTO THE P.C. BOARD.
 - 10) PARTS ARE NOT DESIGNED FOR CURRENT SHARING.
 - 11) DISCOLORATION IN THE BANDOLIER CARRIER AREA OF THE PIN IS INHERENT TO THE PLATING PROCESS AND IS DUE TO THE MASKING EFFECT OF THE CARRIER. THIS DISCOLORATION IS IN A NON-FUNCTIONAL AREA OF THE PIN AND WILL NOT AFFECT THE PERFORMANCE OF THE HEADER ASSEMBLY.
 - 12) PART CONFORMS TO CLASS "B" REQUIREMENTS OF COSMETIC SPECIFICATION PS-45499-002.



RECOMMENDED HOLE LAYOUT FOR
.070/(1.78) MAX. THICK P.C. BOARD.
VIEWED FROM COMPONENT SIDE OF BOARD.

QUALITY SYMBOLS		THIS DRAWING CONTAINS INFORMATION THAT IS PROPRIETARY TO MOLEX ELECTRONIC TECHNOLOGIES, LLC AND SHOULD NOT BE USED WITHOUT WRITTEN PERMISSION															
<div>▽ = 0</div>		ADD TOLERANCES EC NO: 103343 DRWN: CSLAFTER CHKD: FSMITH APPR: FSMITH B1	2016/03/14 2016/03/30 2016/03/30	GENERAL TOLERANCES (UNLESS SPECIFIED)		DIMENSION UNITS		SCALE		<div>molex®</div> 6 CKT. RT AN HDR ASSY. SPECIAL POLARIZATION MINI-FIT JR. SERIES							
<div>▽ = 0</div>					MM	INCH	IN/MM		4:1								
<div>▽ = 0</div>				4 PLACES		±	±	DRWN BY						DATE			
<div>▽ = 0</div>				3 PLACES		±	± .010	GEP						2005/03/12			
<div>▽ = 0</div>				2 PLACES		± 0.25	± .015	CHK'D BY		DATE		PRODUCT CUSTOMER DRAWING					
<div>▽ = 0</div>				1 PLACES		± 0.38	±	YLM		2005/03/12							
<div>▽ = 0</div>				0 PLACES		±	±	APPR BY		DATE							
<div>▽ = 0</div>								FSMITH		2012/02/02							
<div>▽ = 0</div>						ANGULAR TOL ± 1/2		DRAWING SIZE		THIRD ANGLE PROJECTION		SERIES		MATERIAL NUMBER		CUSTOMER	
<div>▽ = 0</div>								C				45732		457320001		GENERAL MARKET	
<div>▽ = 0</div>				DRAFT WHERE APPLICABLE MUST REMAIN WITHIN DIMENSIONS						DOCUMENT NUMBER		DOC TYPE		DOC PART		SHEET NUMBER	
										SD-45732-001		PSD		000		1 OF 1	