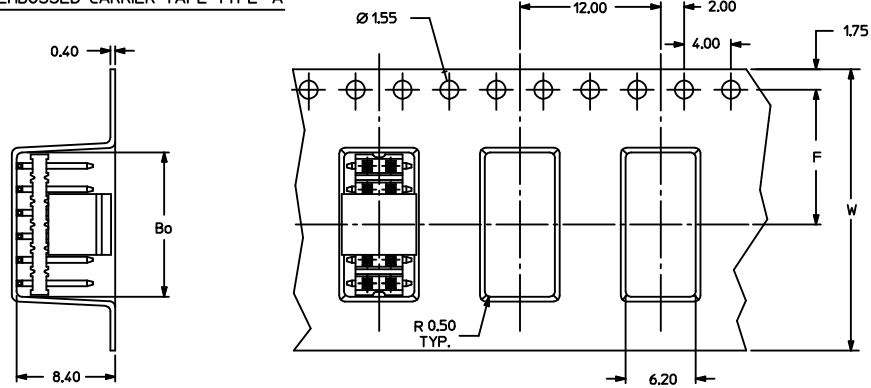


## NOTE:

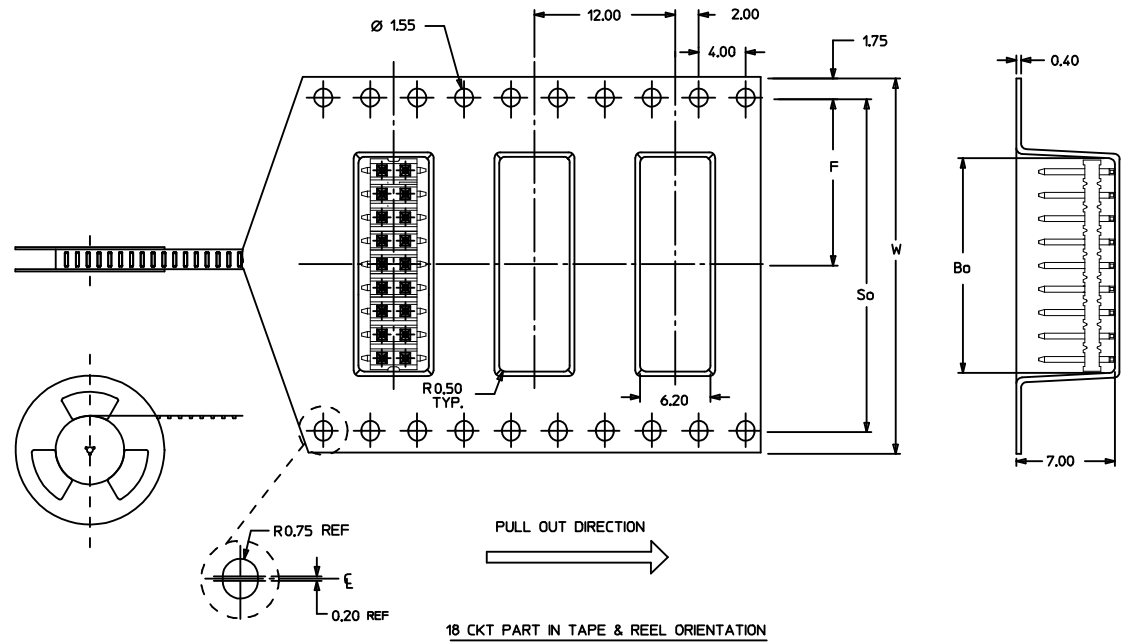
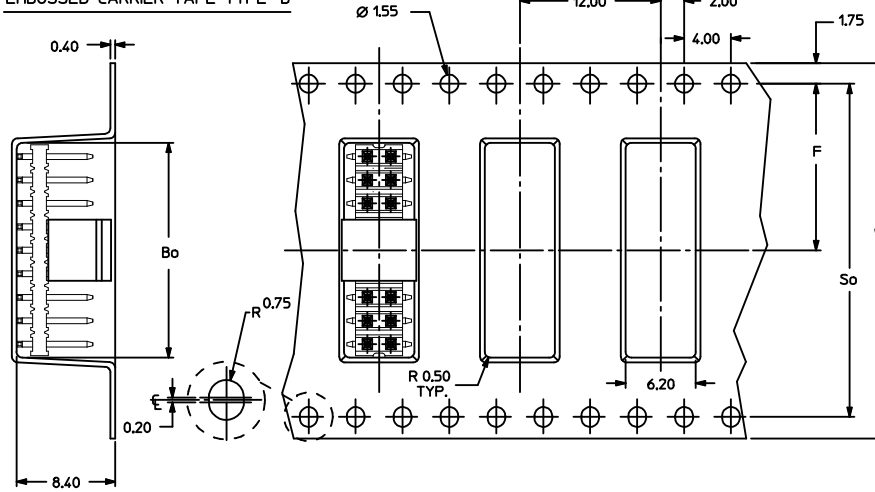
- MATERIAL:  
HSG & CAP - HIGH TEMPERATURE THERMOPLASTIC,  
UL 94V-0, COLOUR BLACK  
  
PIN - 0.50 SQ PHOSPHOR BRONZE
- PLATING:  
\*\*84 - 0.38um MIN GOLD PLATE AT CONTACT AREA,  
TIN PLATE AT SOLDER AREA,  
BOTH OVER NICKEL UNDERPLATE  
  
\*\*85 - 0.76um MIN GOLD PLATE AT CONTACT AREA,  
TIN PLATE AT SOLDER AREA,  
BOTH OVER NICKEL UNDERPLATE  
  
(\*\* - REPRESENTS DIFFERENT CKT SIZE , SEE TABLE AT SHT 3)
- PIN PUSHOUT FORCE: 1KG MIN IN EITHER DIRECTION
- PRODUCT SPEC PS-87761-100 APPLIES.
- BEND DEPRESSION IS ACCEPTABLE SO LONG AS IT DOES NOT AFFECT THE OVERALL COPLANARITY OF TAIL.
- COPLANARITY IS TO BE MEASURED BY RESTING THE SOLDER TAIL ON A GAUGE SURFACE.
- CAP TO BE LOCATED AS CENTRAL OF PART AS POSSIBLE  
TOP SURFACE OF CAP TO BE FLAT FOR THE PURPOSE OF PICK & PLACE BY VACUUM SUCTION NOZZLE.
- FOR ILLUSTRATION PURPOSES, 12CKT IS SHOWN.  
18CKT IS SHOWN ON SHT 2 FOR TAPE & REEL.
- TUBE LENGTH IS 560MM REF STANDARD.

EC NO: S2004-0293 DRWN:KSEE 2004/01/30 CHKD:KCLING 2004/01/30 APPR: SKTOH 2004/02/05	DESCRIPTION	QUALITY SYMBOLS <div>▽ - 0</div> <div>▽ - 0</div>	GENERAL TOLERANCES (UNLESS SPECIFIED)	mm		INCH		DIMENSION STYLE		TITLE		
				4 PLACES ± --- ± ---		MM ONLY		SALES DRAWING				
				3 PLACES ± --- ± ---		DRAWN BY DATE		MGRID 2MM DUAL ROW SMT				
				2 PLACES ± 0.2 ± ---		KSEE 2003/12/23		HDR				
				1 PLACE ± --- ± ---		CHECKED BY DATE		MOLEX INCORPORATED				
A	REV		DRAFT WHERE APPLICABLE	ANGULAR ± 3 °		KCLING 2004/01/12		molex				
				APPROVED BY DATE		MATERIAL NO.		DOCUMENT NO.		SHEET NO.		
				SKTOH 2004/01/12		SEE TABLE		SD-87759-215		1 OF 3		
MUST REMAIN WITHIN DIMENSIONS				THIS DRAWING CONTAINS INFORMATION THAT IS PROPRIETARY TO MOLEX INCORPORATED AND SHOULD NOT BE USED WITHOUT WRITTEN PERMISSION								B

## EMBOSSED CARRIER TAPE TYPE "A"

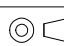




## EMBOSSED CARRIER TAPE TYPE "B"



EC NO: S2004-0293 DRWN:KSEE 2004/01/30 CHKD:KCLING 2004/01/30 APPR:SKTOH 2004/02/05 A	DESCRIPTION REV	QUALITY SYMBOLS <div>▽ = 0</div> <div>∇ = 0</div>	GENERAL TOLERANCES (UNLESS SPECIFIED) <table><tr><th></th><th>mm</th><th>INCH</th></tr><tr><td>4 PLACES</td><td>± ---</td><td>± ---</td></tr><tr><td>3 PLACES</td><td>± ---</td><td>± ---</td></tr><tr><td>2 PLACES</td><td>± 0.2</td><td>± ---</td></tr><tr><td>1 PLACE</td><td>± ---</td><td>± ---</td></tr><tr><td colspan="3">ANGULAR ± 3 °</td></tr></table> DRAFT WHERE APPLICABLE MUST REMAIN WITHIN DIMENSIONS		mm	INCH	4 PLACES	± ---	± ---	3 PLACES	± ---	± ---	2 PLACES	± 0.2	± ---	1 PLACE	± ---	± ---	ANGULAR ± 3 °			SCALE NTS	DESIGN UNITS METRIC	THIRD ANGLE PROJECTION		REVISE ON CAD ONLY
					mm	INCH																				
				4 PLACES	± ---	± ---																				
				3 PLACES	± ---	± ---																				
				2 PLACES	± 0.2	± ---																				
				1 PLACE	± ---	± ---																				
ANGULAR ± 3 °																										
DIMENSION STYLE MM ONLY		TITLE SALES DRAWING MGRID 2MM DUAL ROW SMT HDR																								
DRAWN BY KSEE						DATE 2003/12/23																				
CHECKED BY KCLING		DATE 2004/01/12		MOLEX MOLEX INCORPORATED																						
APPROVED BY SKTOH		DATE 2004/01/12																								
				MATERIAL NO. SEE TABLE	DOCUMENT NO. SD-87759-215	SHEET NO. 2 OF 3																				
THIS DRAWING CONTAINS INFORMATION THAT IS PROPRIETARY TO MOLEX INCORPORATED AND SHOULD NOT BE USED WITHOUT WRITTEN PERMISSION								B																		

	10	9	8		7			6		5	4	3	2	87759	
F	PART NUMBER WITHOUT CAP IN TUBE	PART NUMBER WITHOUT CAP IN TAPE & REEL.	CKT SIZE	A	B	Bo	F	So	W	EMBOSSED TYPE					
	87759-4014	87759-4084	40	39.90	38.00	40.20	26.20	52.40	56.00	B					
	87759-4015	87759-4085	40	39.90	38.00	40.20	26.20	52.40	56.00	B					
E															
D															
C															
B															
A															
fb_frame_B rev. B1 2000/08/01															

EC NO: S2004-0293 DRWN:KSEE 2004/01/30 CHKD:KCLING 2004/01/30 APPR:SKTOH 2004/02/05	DESCRIPTION REV	QUALITY SYMBOLS	GENERAL TOLERANCES (UNLESS SPECIFIED)		SCALE NTS	DESIGN UNITS METRIC	 THIRD ANGLE PROJECTION	REVISE ON CAD ONLY				
		 0  0		mm	INCH	DIMENSION STYLE MM ONLY		TITLE SALES DRAWING MGRID 2MM DUAL ROW SMT HDR				
			4 PLACES	± ---	± ---	DRAWN BY DATE						
			3 PLACES	± ---	± ---	KSEE 2003/12/23						
			2 PLACES	± 0.2	± ---	CHECKED BY DATE						
			1 PLACE	± ---	± ---	KCLING 2004/01/12						
		ANGULAR ± 3 °			APPROVED BY DATE		MATERIAL NO. DOCUMENT NO. SHEET NO. SEE TABLE SD-87759-215 3 OF 3					
		DRAFT WHERE APPLICABLE MUST REMAIN WITHIN DIMENSIONS			SKTOH 2004/01/12							
		THIS DRAWING CONTAINS INFORMATION THAT IS PROPRIETARY TO MOLEX INCORPORATED AND SHOULD NOT BE USED WITHOUT WRITTEN PERMISSION										B