

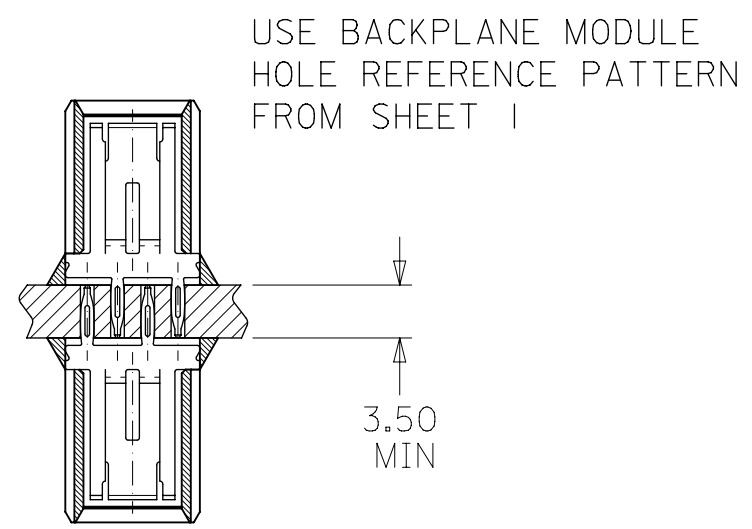
73656-100\*                      73656-200\*

DATE CODE AND  
PART NUMBER ON  
THIS SURFACE OR  
SURFACE OPPOSITE.

# MIDPLANE OPTION

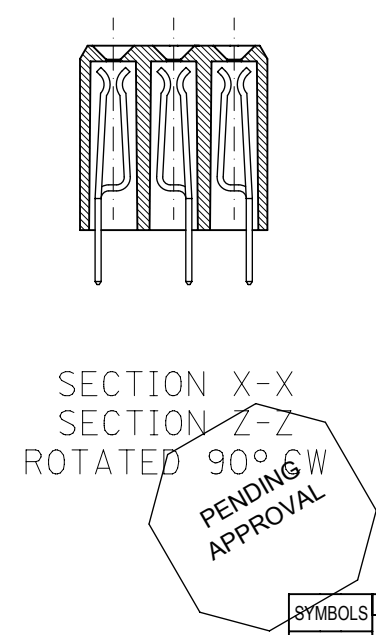
ASSEMBLY NUMBER	FINISH (SEE SHT 1)
73656-1000	SEE NOTE 2. (GOLD TAILS)
73656-2000	
73656-1001	SEE NOTE 3. *(MATTE TIN TAILS)
73656-2001	

\* FORMERLY TIN/LEAD

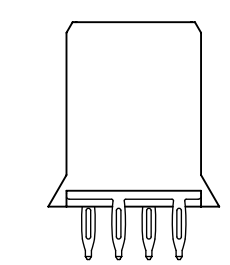
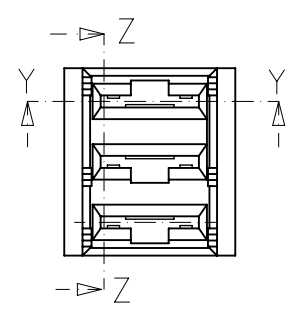


BACK-TO-BACK  
MOUNTING APPLICATION

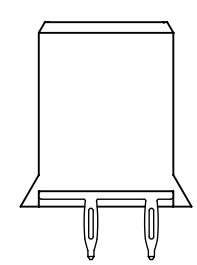
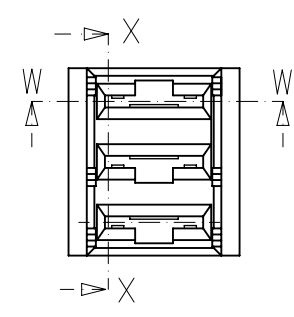
USE BACKPLANE MODULE  
HOLE REFERENCE PATTERN  
FROM SHEET 1



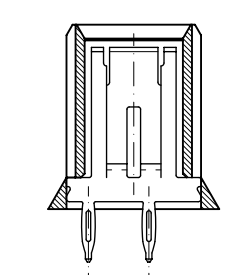
SECTION X-X  
SECTION Z-Z  
ROTATED 90° CW  
PENDING APPROVAL



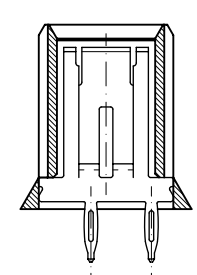
73656-200\*



73656-100\*



SECTION: Y-Y  
(4.00)



SECTION: W-W  
(4.00)

DOCUMENT STATUS	RQ	RELEASE DATE
-----------------	----	--------------

THIS DRAWING CONTAINS INFORMATION THAT IS PROPRIETARY TO MOLEX ELECTRONIC TECHNOLOGIES, LLC AND SHOULD NOT BE USED WITHOUT WRITTEN PERMISSION											
SYMBOLS		DIMENSION UNITS		SCALE		CURRENT REV DESC:  <					



