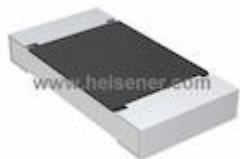


CRCW2010620KFKEF Information


For Reference Only

Part Number [CRCW2010620KFKEF](#)
Manufacturer Vishay Dale
Category Resistors
[Chip Resistor - Surface Mount](#)
Description RES SMD 620K OHM 1% 3/4W 2010
Package 2010 (5025 Metric)
 For the pricing/inventory/lead time, please contact us
 Website: <https://www.heisener.com>
 E-mail: salesdept@heisener.com


[Request a Quote](#)
Certified Quality

Heisener's commitment to quality has shaped our processes for sourcing, testing, shipping, and every step in between. This foundation underlies each component we sell.


CRCW2010620KFKEF Specifications

Manufacturer Part Number	CRCW2010620KFKEF
Manufacturer	Vishay Dale
Category	Resistors
	Chip Resistor - Surface Mount
Package	2010 (5025 Metric)
Series	CRCW
Resistance	620 kOhms
Tolerance	±1%
Power (Watts)	0.75W, 3/4W
Composition	Thick Film
Features	Automotive AEC-Q200
Temperature Coefficient	±100ppm/°C
Operating Temperature	-55°C ~ 155°C
Package / Case	2010 (5025 Metric)
Supplier Device Package	2010
Size / Dimension	0.197" L x 0.098" W (5.00mm x 2.50mm)
Height - Seated (Max)	0.028" (0.70mm)
Number of Terminations	2
Failure Rate	-

[Report errors?](#)

CRCW2010620KFKEF Guarantees



Quality Guarantees

We provide 90 days warranty. *

If the items you received were not in perfect quality, we would be responsible for your refund or replacement, but the items must be returned in their original condition.



Service Guarantees

We guarantee 100% customer satisfaction.

Our experienced sales team and tech support team back our services to satisfy all our customers.

CRCW2010620KFKEF Payment Methods



CRCW2010620KFKEF Shipping Methods



If you have any question about CRCW2010620KFKEF, please do not hesitate to contact us!

Website: <https://www.heisener.com>

E-mail: salesdept@heisener.com