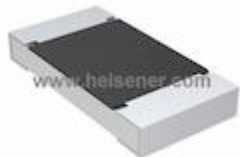


CRCW20107M15FKEF Information


For Reference Only

Part Number [CRCW20107M15FKEF](#)
Manufacturer Vishay Dale
Category Resistors
[Chip Resistor - Surface Mount](#)
Description RES SMD 7.15M OHM 1% 3/4W 2010
Package 2010 (5025 Metric)
 For the pricing/inventory/lead time, please contact us
 Website: <https://www.heisener.com>
 E-mail: salesdept@heisener.com


[Request a Quote](#)
Certified Quality

Heisener's commitment to quality has shaped our processes for sourcing, testing, shipping, and every step in between. This foundation underlies each component we sell.


CRCW20107M15FKEF Specifications

Manufacturer Part Number	CRCW20107M15FKEF
Manufacturer	Vishay Dale
Category	Resistors
	Chip Resistor - Surface Mount
Package	2010 (5025 Metric)
Series	CRCW
Resistance	7.15 MOhms
Tolerance	±1%
Power (Watts)	0.75W, 3/4W
Composition	Thick Film
Features	Automotive AEC-Q200
Temperature Coefficient	±100ppm/°C
Operating Temperature	-55°C ~ 155°C
Package / Case	2010 (5025 Metric)
Supplier Device Package	2010
Size / Dimension	0.197" L x 0.098" W (5.00mm x 2.50mm)
Height - Seated (Max)	0.028" (0.70mm)
Number of Terminations	2
Failure Rate	-

[Report errors?](#)

CRCW20107M15FKEF Guarantees



Quality Guarantees

We provide 90 days warranty. *

If the items you received were not in perfect quality, we would be responsible for your refund or replacement, but the items must be returned in their original condition.



Service Guarantees

We guarantee 100% customer satisfaction.

Our experienced sales team and tech support team back our services to satisfy all our customers.

CRCW20107M15FKEF Payment Methods



CRCW20107M15FKEF Shipping Methods



If you have any question about CRCW20107M15FKEF, please do not hesitate to contact us!

Website: <https://www.heisener.com>

E-mail: salesdept@heisener.com