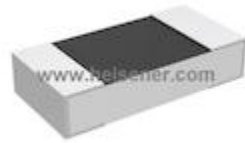


**D55342E07B5B62R Information**


For Reference Only

**Part Number** [D55342E07B5B62R](#)  
**Manufacturer** TT Electronics/IRC  
**Category** Resistors  
[Chip Resistor - Surface Mount](#)  
**Description** RES SMD 5.62K OHM 0.1% 1/4W 1206  
**Package** 1206 (3216 Metric)  
 For the pricing/inventory/lead time, please contact us  
 Website: <https://www.heisener.com>  
 E-mail: [salesdept@heisener.com](mailto:salesdept@heisener.com)



[Request a Quote](#)

**Certified Quality**

Heisener's commitment to quality has shaped our processes for sourcing, testing, shipping, and every step in between. This foundation underlies each component we sell.


**D55342E07B5B62R Specifications**

Manufacturer Part Number	<a href="#">D55342E07B5B62R</a>
Manufacturer	TT Electronics/IRC
Category	Resistors <a href="#">Chip Resistor - Surface Mount</a>
Package	1206 (3216 Metric)
Series	Military, MIL-PRF-55342, RM1206
Resistance	5.62 kOhms
Tolerance	±0.1%
Power (Watts)	0.25W, 1/4W
Composition	Thin Film
Features	Military, Moisture Resistant
Temperature Coefficient	±25ppm/°C
Operating Temperature	-55°C ~ 150°C
Package / Case	1206 (3216 Metric)
Supplier Device Package	1206
Size / Dimension	0.126" L x 0.063" W (3.20mm x 1.60mm)
Height - Seated (Max)	0.028" (0.71mm)
Number of Terminations	2
Failure Rate	R (0.01%)

[Report errors?](#)

## D55342E07B5B62R Guarantees



### Quality Guarantees

We provide 90 days warranty. \*

If the items you received were not in perfect quality, we would be responsible for your refund or replacement, but the items must be returned in their original condition.



### Service Guarantees

We guarantee 100% customer satisfaction.

Our experienced sales team and tech support team back our services to satisfy all our customers.

## D55342E07B5B62R Payment Methods



## D55342E07B5B62R Shipping Methods



If you have any question about D55342E07B5B62R, please do not hesitate to contact us!

Website: <https://www.heisener.com>

E-mail: [salesdept@heisener.com](mailto:salesdept@heisener.com)