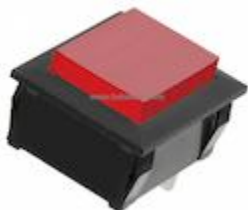


**LP2W-L2-Z Information**


For Reference Only

**Part Number** [LP2W-L2-Z](#)  
**Manufacturer** Copal Electronics Inc.  
**Category** Optoelectronics  
[Panel Indicators, Pilot Lights](#)  
**Description** PILOT LIGHT 12X15.6MM RED LED  
**Package** -  
 For the pricing/inventory/lead time, please contact us  
 Website: <https://www.heisener.com>  
 E-mail: [salesdept@heisener.com](mailto:salesdept@heisener.com)


[Request a Quote](#)
**Certified Quality**

Heisener's commitment to quality has shaped our processes for sourcing, testing, shipping, and every step in between. This foundation underlies each component we sell.


**LP2W-L2-Z Specifications**

Manufacturer Part Number	<a href="#">LP2W-L2-Z</a>
Manufacturer	Copal Electronics Inc.
Category	Optoelectronics <a href="#">Panel Indicators, Pilot Lights</a>
Package	-
Series	-
Type	LED
Lamp Color	Red
Lens Color	Red
Lens Transparency	Clear
Ratings	Vf (Typ), If (Max)
Voltage	2V
Current	30mA
Panel Cutout Shape	Rectangular
Panel Cutout Dimensions	0.76" x 0.64" (19.20mm x 16.20mm)
Lens Style/Size	Rectangle with Flat Top, 15.60mm x 12.00mm
Millicandela Rating	-
Wavelength - Peak	-
Viewing Angle	-
Termination Style	-
Ingress Protection	-
Features	-

[Report errors?](#)

## LP2W-L2-Z Guarantees



### Quality Guarantees

We provide 90 days warranty. \*

If the items you received were not in perfect quality, we would be responsible for your refund or replacement, but the items must be returned in their original condition.



### Service Guarantees

We guarantee 100% customer satisfaction.

Our experienced sales team and tech support team back our services to satisfy all our customers.

## LP2W-L2-Z Payment Methods



## LP2W-L2-Z Shipping Methods



If you have any question about LP2W-L2-Z, please do not hesitate to contact us!

Website: <https://www.heisener.com>

E-mail: [salesdept@heisener.com](mailto:salesdept@heisener.com)