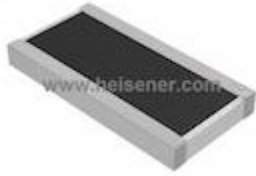


**LTR18EZPF6811 Information**


For Reference Only

**Part Number** [LTR18EZPF6811](#)  
**Manufacturer** Rohm Semiconductor  
**Category** Resistors  
[Chip Resistor - Surface Mount](#)  
**Description** RES SMD 6.81K OHM 3/4W 1206 WIDE  
**Package** Wide 1206 (3216 Metric), 0612  
 For the pricing/inventory/lead time, please contact us  
 Website: <https://www.heisener.com>  
 E-mail: [salesdept@heisener.com](mailto:salesdept@heisener.com)



[Request a Quote](#)

**Certified Quality**

Heisener's commitment to quality has shaped our processes for sourcing, testing, shipping, and every step in between. This foundation underlies each component we sell.


**LTR18EZPF6811 Specifications**

Manufacturer Part Number	<a href="#">LTR18EZPF6811</a>
Manufacturer	Rohm Semiconductor
Category	Resistors <a href="#">Chip Resistor - Surface Mount</a>
Package	Wide 1206 (3216 Metric), 0612
Series	LTR
Resistance	6.81 kOhms
Tolerance	±1%
Power (Watts)	0.75W, 3/4W
Composition	Thick Film
Features	Automotive AEC-Q200, Pulse Withstanding
Temperature Coefficient	±100ppm/°C
Operating Temperature	-55°C ~ 155°C
Package / Case	Wide 1206 (3216 Metric), 0612
Supplier Device Package	0612 (1632 Metric)
Size / Dimension	0.063" L x 0.126" W (1.60mm x 3.20mm)
Height - Seated (Max)	0.026" (0.65mm)
Number of Terminations	2
Failure Rate	-

[Report errors?](#)

## LTR18EZPF6811 Guarantees



### Quality Guarantees

We provide 90 days warranty. \*

If the items you received were not in perfect quality, we would be responsible for your refund or replacement, but the items must be returned in their original condition.



### Service Guarantees

We guarantee 100% customer satisfaction.

Our experienced sales team and tech support team back our services to satisfy all our customers.

## LTR18EZPF6811 Payment Methods



## LTR18EZPF6811 Shipping Methods



If you have any question about LTR18EZPF6811, please do not hesitate to contact us!

Website: <https://www.heisener.com>

E-mail: [salesdept@heisener.com](mailto:salesdept@heisener.com)