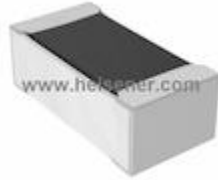


**M55342E12B3B32R Information**


For Reference Only

**Part Number** [M55342E12B3B32R](#)  
**Manufacturer** TT Electronics/IRC  
**Category** Resistors  
[Chip Resistor - Surface Mount](#)  
**Description** RES SMD 3.32KOHM 0.1% 1/10W 0603  
**Package** 0603 (1608 Metric)  
 For the pricing/inventory/lead time, please contact us  
 Website: <https://www.heisener.com>  
 E-mail: [salesdept@heisener.com](mailto:salesdept@heisener.com)



[Request a Quote](#)

**Certified Quality**

Heisener's commitment to quality has shaped our processes for sourcing, testing, shipping, and every step in between. This foundation underlies each component we sell.


**M55342E12B3B32R Specifications**

Manufacturer Part Number	<a href="#">M55342E12B3B32R</a>
Manufacturer	TT Electronics/IRC
Category	Resistors <a href="#">Chip Resistor - Surface Mount</a>
Package	0603 (1608 Metric)
Series	Military, MIL-PRF-55342, RM0603
Resistance	3.32 kOhms
Tolerance	±0.1%
Power (Watts)	0.1W, 1/10W
Composition	Thin Film
Features	Military, Moisture Resistant
Temperature Coefficient	±25ppm/°C
Operating Temperature	-55°C ~ 150°C
Package / Case	0603 (1608 Metric)
Supplier Device Package	0603
Size / Dimension	0.063" L x 0.031" W (1.60mm x 0.80mm)
Height - Seated (Max)	0.024" (0.60mm)
Number of Terminations	2
Failure Rate	R (0.01%)

[Report errors?](#)

## M55342E12B3B32R Guarantees



### Quality Guarantees

We provide 90 days warranty. \*

If the items you received were not in perfect quality, we would be responsible for your refund or replacement, but the items must be returned in their original condition.



### Service Guarantees

We guarantee 100% customer satisfaction.

Our experienced sales team and tech support team back our services to satisfy all our customers.

## M55342E12B3B32R Payment Methods



## M55342E12B3B32R Shipping Methods



If you have any question about M55342E12B3B32R, please do not hesitate to contact us!

Website: <https://www.heisener.com>

E-mail: [salesdept@heisener.com](mailto:salesdept@heisener.com)