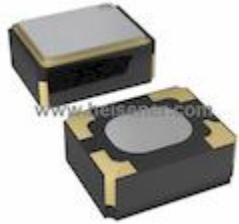


**MC2016K40.0000C16ESH Information**


For Reference Only

**Part Number** [MC2016K40.0000C16ESH](#)  
**Manufacturer** AVX Corp/Kyocera Corp  
**Category** Crystals, Oscillators, Resonators  
[Oscillators](#)  
**Description** OSC XO 40.0000MHZ CMOS SMD  
**Package** 4-SMD, No Lead  
 For the pricing/inventory/lead time, please contact us  
 Website: <https://www.heisener.com>  
 E-mail: [salesdept@heisener.com](mailto:salesdept@heisener.com)


[Request a Quote](#)
**Certified Quality**

Heisener's commitment to quality has shaped our processes for sourcing, testing, shipping, and every step in between. This foundation underlies each component we sell.


**MC2016K40.0000C16ESH Specifications**

Manufacturer Part Number	<a href="#">MC2016K40.0000C16ESH</a>
Manufacturer	AVX Corp/Kyocera Corp
Category	Crystals, Oscillators, Resonators <a href="#">Oscillators</a>
Package	4-SMD, No Lead
Series	MC2016K, Kyocera
Type	XO (Standard)
Frequency	40MHz
Function	Enable/Disable
Output	CMOS
Voltage - Supply	1.6 V ~ 3.63 V
Frequency Stability	-
Operating Temperature	-40°C ~ 105°C
Current - Supply (Max)	5mA
Ratings	AEC-Q100, AEC-Q200
Mounting Type	Surface Mount
Package / Case	4-SMD, No Lead
Size / Dimension	0.079" L x 0.063" W (2.00mm x 1.60mm)
Height - Seated (Max)	0.031" (0.80mm)

[Report errors?](#)

## MC2016K40.0000C16ESH Guarantees



### Quality Guarantees

We provide 90 days warranty. \*

If the items you received were not in perfect quality, we would be responsible for your refund or replacement, but the items must be returned in their original condition.



### Service Guarantees

We guarantee 100% customer satisfaction.

Our experienced sales team and tech support team back our services to satisfy all our customers.

## MC2016K40.0000C16ESH Payment Methods



## MC2016K40.0000C16ESH Shipping Methods



If you have any question about MC2016K40.0000C16ESH, please do not hesitate to contact us!

Website: <https://www.heisener.com>

E-mail: [salesdept@heisener.com](mailto:salesdept@heisener.com)