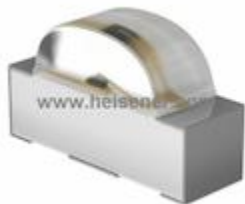


**QTLP610CBTR Information**


For Reference Only

**Part Number** [QTLP610CBTR](#)  
**Manufacturer** Fairchild/ON Semiconductor  
**Category** Optoelectronics  
[LED Indication - Discrete](#)  
**Description** LED BLUE CLEAR 2SMD R/A  
**Package** 2-SMD, No Lead  
 For the pricing/inventory/lead time, please contact us  
 Website: <https://www.heisener.com>  
 E-mail: [salesdept@heisener.com](mailto:salesdept@heisener.com)


[Request a Quote](#)
**Certified Quality**

Heisener's commitment to quality has shaped our processes for sourcing, testing, shipping, and every step in between. This foundation underlies each component we sell.


**QTLP610CBTR Specifications**

Manufacturer Part Number	<a href="#">QTLP610CBTR</a>
Manufacturer	Fairchild/ON Semiconductor
Category	Optoelectronics
	<a href="#">LED Indication - Discrete</a>
Package	2-SMD, No Lead
Series	-
Color	Blue
Configuration	-
Lens Color	Colorless
Lens Transparency	Clear
Millicandela Rating	25mcd
Lens Style/Size	Rectangle with Domed Top, 2.00mm x 1.00mm
Voltage - Forward (Vf) (Typ)	3.8V
Current - Test	20mA
Viewing Angle	120°
Mounting Type	Surface Mount, Right Angle
Wavelength - Dominant	465nm
Wavelength - Peak	430nm
Features	-
Package / Case	2-SMD, No Lead
Supplier Device Package	SMD
Size / Dimension	3.00mm L x 2.00mm W
Height (Max)	1.10mm
	<a href="#">Report errors?</a>

## QTLP610CBTR Guarantees



### Quality Guarantees

We provide 90 days warranty. \*

If the items you received were not in perfect quality, we would be responsible for your refund or replacement, but the items must be returned in their original condition.



### Service Guarantees

We guarantee 100% customer satisfaction.

Our experienced sales team and tech support team back our services to satisfy all our customers.

## QTLP610CBTR Payment Methods



## QTLP610CBTR Shipping Methods



If you have any question about QTLP610CBTR, please do not hesitate to contact us!

Website: <https://www.heisener.com>

E-mail: [salesdept@heisener.com](mailto:salesdept@heisener.com)