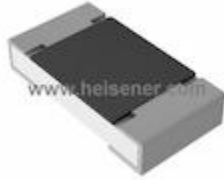


**RTAN1206BKE1K00 Information**


For Reference Only

**Part Number** [RTAN1206BKE1K00](#)  
**Manufacturer** Stackpole Electronics Inc.  
**Category** Resistors  
     [Chip Resistor - Surface Mount](#)  
**Description** RES SMD 1K OHM 0.1% 0.4W 1206  
**Package** 1206 (3216 Metric)  
 For the pricing/inventory/lead time, please contact us  
 Website: <https://www.heisener.com>  
 E-mail: [salesdept@heisener.com](mailto:salesdept@heisener.com)


[Request a Quote](#)
**Certified Quality**

Heisener's commitment to quality has shaped our processes for sourcing, testing, shipping, and every step in between. This foundation underlies each component we sell.


**RTAN1206BKE1K00 Specifications**

Manufacturer Part Number	<a href="#">RTAN1206BKE1K00</a>
Manufacturer	Stackpole Electronics Inc.
Category	Resistors <a href="#">Chip Resistor - Surface Mount</a>
Package	1206 (3216 Metric)
Series	RTAN
Resistance	1 kOhms
Tolerance	±0.1%
Power (Watts)	0.4W
Composition	Thin Film
Features	Anti-Sulfur, Automotive AEC-Q200, Moisture Resistant
Temperature Coefficient	±25ppm/°C
Operating Temperature	-55°C ~ 155°C
Package / Case	1206 (3216 Metric)
Supplier Device Package	1206
Size / Dimension	0.122" L x 0.063" W (3.10mm x 1.60mm)
Height - Seated (Max)	0.030" (0.75mm)
Number of Terminations	2
Failure Rate	-

[Report errors?](#)

## RTAN1206BKE1K00 Guarantees



### Quality Guarantees

We provide 90 days warranty. \*

If the items you received were not in perfect quality, we would be responsible for your refund or replacement, but the items must be returned in their original condition.



### Service Guarantees

We guarantee 100% customer satisfaction.

Our experienced sales team and tech support team back our services to satisfy all our customers.

## RTAN1206BKE1K00 Payment Methods



## RTAN1206BKE1K00 Shipping Methods



If you have any question about RTAN1206BKE1K00, please do not hesitate to contact us!

Website: <https://www.heisener.com>

E-mail: [salesdept@heisener.com](mailto:salesdept@heisener.com)